

Flagler College
Emergency Action and Fire Safety Plan

Individual building evacuation plans

Flagler College
Emergency Action and Fire Safety Plan

Ponce Hall

Lobby Level

1. When alarm sounds, promptly leave room and exit building via the primary exits, following lit exit signs or direction of Security Guards. There are exits on the North and South end of the lobby,
2. Use an alternate exit ONLY if the primary exit is blocked.
3. Use a window to exit the building ONLY if the first options are blocked or unavailable. (windows should only be used as a last resort)
4. After exiting the building, proceed to the gathering area/assembly point and await further instructions.
5. Do not attempt to re-enter the building for any reason.
6. Always remember to remain calm during the entire evacuation process.

First / Second / Third Floor

1. When alarm sounds, promptly leave room and exit building via the primary exit shown on the posted evacuation maps. Follow illuminated exit signs to the North, to midway stairwells on corridors running Northwest to Southeast, or to the Emergency Stairwells on the Southeast corner of Ponce Hall East, and Southwest corner of Ponce Hall West.
2. Use an alternate exit ONLY if the primary exit is blocked.
3. Do not use any window to exit the building. If other exit options are blocked, remain in an available stairwell until help arrives.
4. After exiting the building, proceed to the gathering area/assembly point and await further instructions. If exiting the West side, head to the West Lawn. If exiting the Eastern side, travel North / Northeast and muster in the Northeast corner of Kenan Parking Lot.
5. Do not attempt to re-enter the building for any reason.
6. Always remember to remain calm during the entire evacuation process.

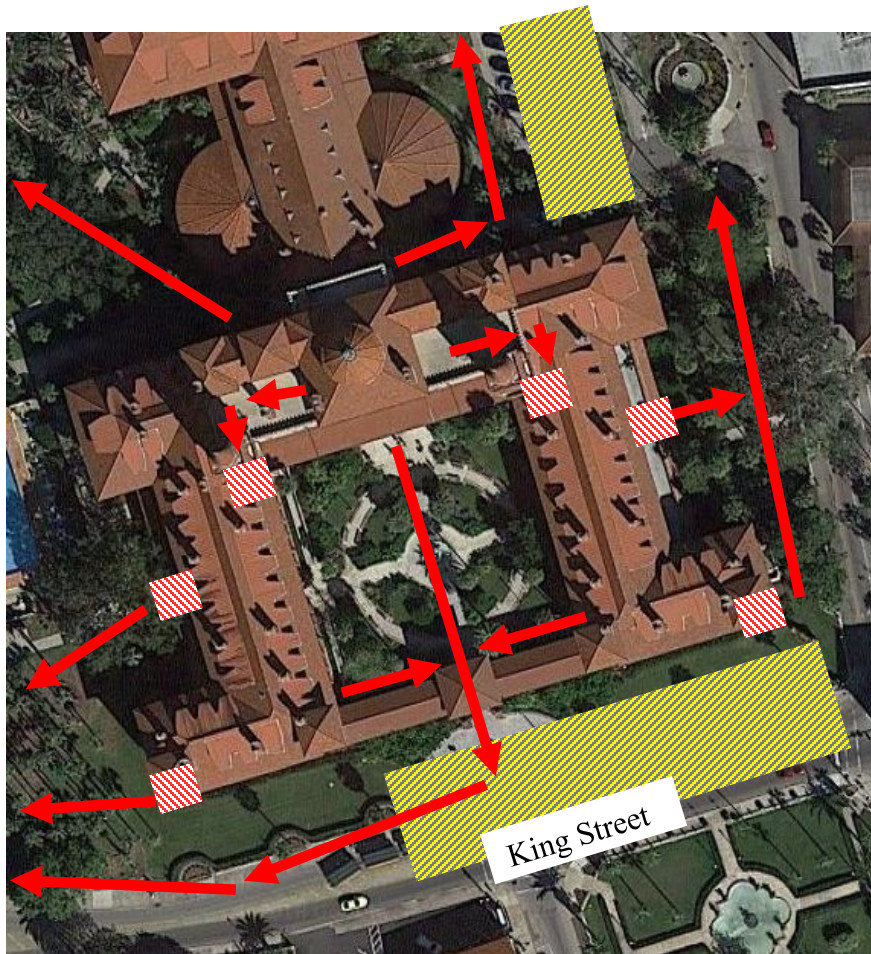
Fourth Floor (Solarium)


1. When alarm sounds, promptly leave area and exit building via the primary exit shown on the posted evacuation maps. Follow illuminated exit signs. Do not attempt to use elevators or muster on the patios. Proceed directly to East or West Stairwell and descend immediately.
2. Use an alternate exit ONLY if the primary exit is blocked.
 - A. Do not use any window to exit the building. If other exit options are blocked, remain in an available fire stairwell until help arrives.
3. After exiting the building, proceed to the gathering area/assembly point and await further instructions.
4. Do not attempt to re-enter the building for any reason.
5. Always remember to remain calm during the entire evacuation process.


Flagler College Emergency Action and Fire Safety Plan

Gathering Areas/Assembly Points:

- West Lawn, past the gazebo. Muster along Sevilla St.
- If exiting through the courtyard, go west of main entrance on King St. sidewalk. Proceed down Sevilla Street in a Northerly direction toward the West Lawn



 = Fire Exit / stairwell

 = Vehicle Emergency Access

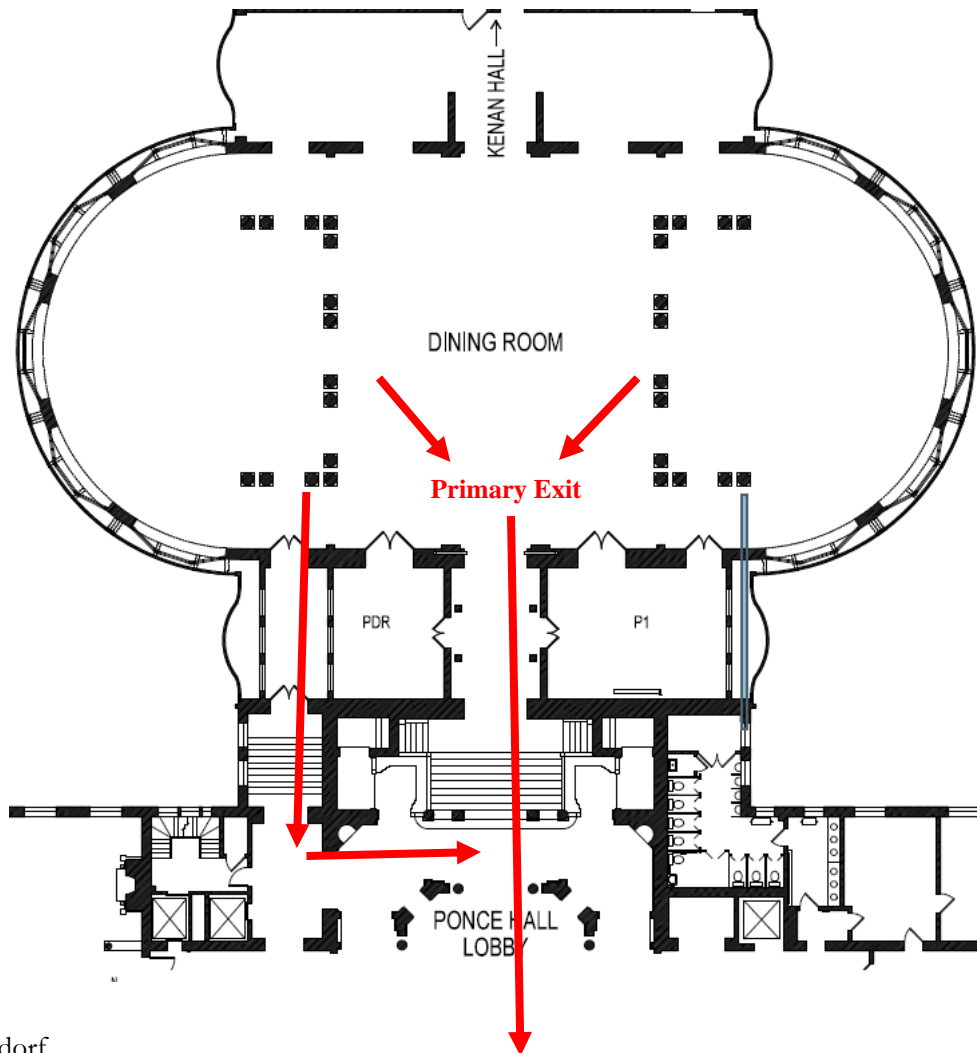
REMEMBER: Stay clear of the Kenan Parking area and vehicle paths, Emergency Vehicles need clear access to the buildings from all sides. DO NOT assemble in the courtyard, proceed directly out toward King Street, but not onto the street and go West toward Palm Garden / West Lawn.

Flagler College
Emergency Action and Fire Safety Plan

Ponce Dining Hall

Dining Area

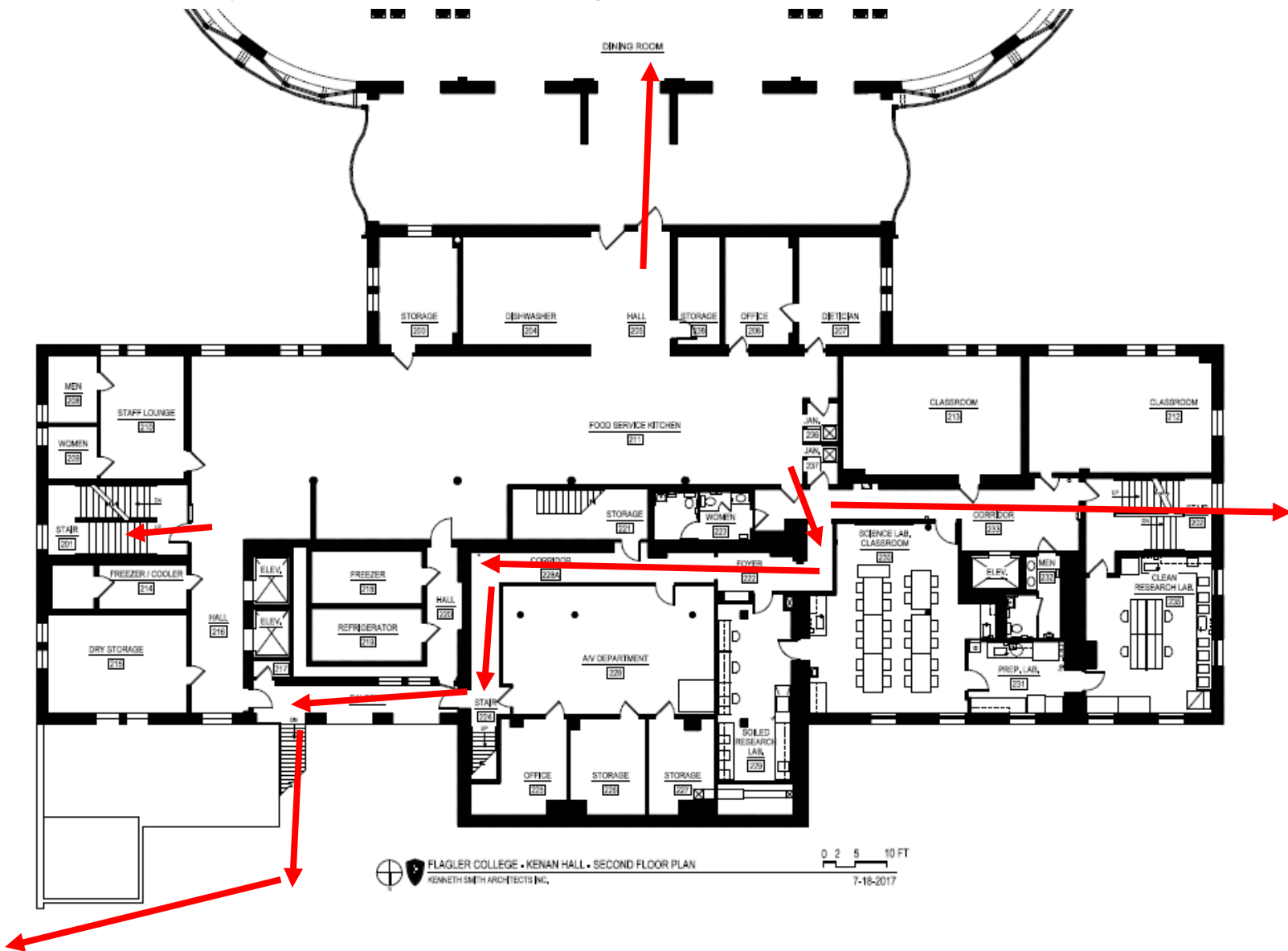
1. When alarm sounds, promptly leave dining area and exit building via the primary exits, following lit exit signs or direction of Security Guards. There are exits on the North and South end of the main lobby,
 - a. The pad locked exit where the handicap stair lift is will be manned by Campus security, unlocked and will assist and disabled persons down the lift or stairs
 - b. This will be unlocked right away in the event there is an emergency
2. Use an alternate exit ONLY if the primary exit is blocked.
 - a. Do not exit through the kitchen. The floor may be wet and/or oily and students may not have slip resistant footwear, leading to accidents or injuries
3. Use a window to exit the building ONLY if the first options are blocked or unavailable. (windows should only be used as a last resort, in this case they DO NOT OPEN)
4. After exiting the building, proceed to the gathering area and await further instructions.
5. Do not attempt to re-enter the building for any reason.
6. Always remember to remain calm during the entire evacuation process.



Flagler College Emergency Action and Fire Safety Plan

Ponce Dining Hall Kitchen

1. When alarm sounds, promptly turn off all burners, heaters, fryers, ovens or running water.
2. Leave kitchen area and exit building via the primary exits, following lit exit signs or direction of Security Guards.
3. Use an alternate exit ONLY if the primary exit is blocked.
 - a. The floor may be wet and/or oily, do not run
 - b. Do NOT let students exit through the kitchen, they do not have proper footwear
4. Use a window to exit the building ONLY if the first options are blocked or unavailable. (windows should only be used as a last resort)
5. After exiting the building, proceed to the gathering area and await further instructions.
6. Do not attempt to re-enter the building for any reason.
7. Always remember to remain calm during the entire evacuation process.



Flagler College
Emergency Action and Fire Safety Plan

Ponce Dining Hall Kitchen cont'd

Gathering Areas/Assembly Points:

- Northeast side of the Kenan Parking lot
- West Lawn
- Always proceed past the Ponce Courtyard, near the roadway outside of the courtyard (see below)

REMEMBER: Stay out of the roadway. The street and the parking area need to remain clear of any traffic so that the rescue vehicles have unimpeded access. Students will be evacuating Ponce dormitories as well, so proceed to West Lawn as quick as possible if applicable. Evacuate the immediate vicinity of the building but do not leave the area.

Flagler College
Emergency Action and Fire Safety Plan

Cedar Hall

First Floor

1. When alarm sounds, promptly leave room and exit building via the primary exit shown on the posted evacuation maps. This is either the Emergency Exit in the North Stairwell or Main Lobby Entrance/Exit on the East side of the main lobby.
2. Use an alternate exit only if the primary exit is blocked.
3. Use a window to exit the building only if the first options are blocked or unavailable. (windows should only be used as a last resort)
4. After exiting the building, proceed to the gathering area/assembly point and await further instructions.
5. Do not attempt to re-enter the building for any reason.
6. Always remember to remain calm during the entire evacuation process.

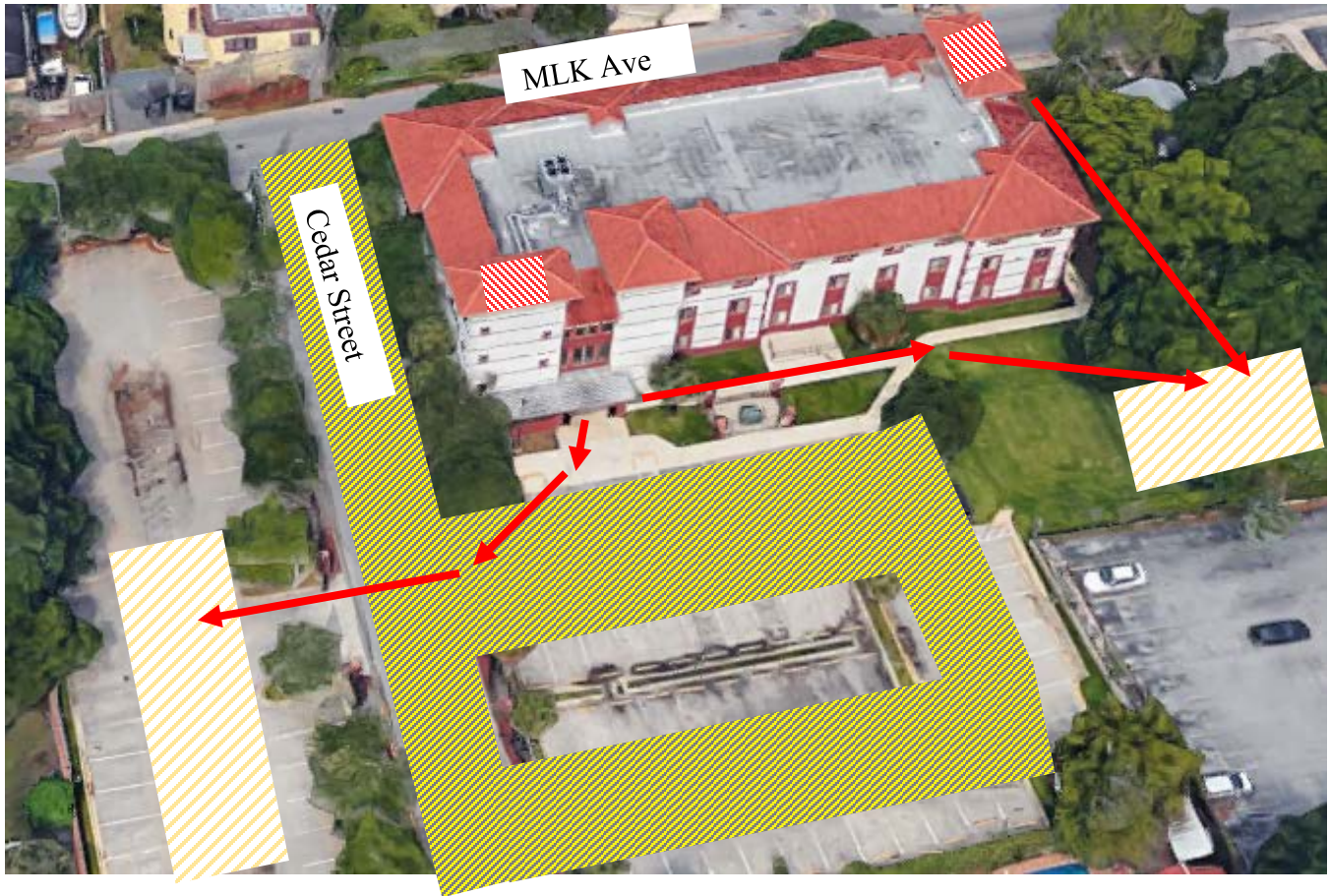
Second/Third Floor


1. When alarm sounds, promptly leave room and exit building via the primary exit shown on the posted evacuation maps. Proceed to either the North or South Stairwell, whichever is closer.
2. Use an alternate exit only if the primary exit is blocked.
3. Do not use any window to exit the building. If other exit options are blocked, remain in an available stairwell until help arrives.
4. After exiting the building, proceed to the Northeast corner of the Parking Lot and await further instructions.
5. Do not attempt to re-enter the building for any reason.
6. Always remember to remain calm during the entire evacuation process.

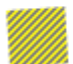
Gathering Areas/Assembly Points:

- Northeast side of the Cedar Parking area.
- South, across the street in the Student Parking Lot. Proceed with caution when crossing road.
 - If Campus Security is present, they are to assist with stopping traffic so students can evacuate to the lot across the street

Flagler College Emergency Action and Fire Safety Plan



 = Fire Exit / stairwell

 = Vehicle Emergency Access

REMEMBER: Stay out of the roadway. The street and the parking area need to remain clear of any traffic so that the rescue vehicles have unimpeded access. Evacuate the immediate vicinity of the building but do not leave the area.

Flagler College
Emergency Action and Fire Safety Plan

FEC Residence Hall Towers

First Floor / Lobby Level

1. When alarm sounds, promptly leave room and exit building via the primary exit shown on the posted evacuation maps. Proceed to nearest "EXIT" sign.
 2. Use an alternate exit only if the primary exit is blocked.
 3. Use a window to exit the building only if the first options are blocked or unavailable. (windows should only be used as a last resort)
 4. After exiting the building, proceed to the gathering area/assembly point and await further instructions.
 5. Do not attempt to re-enter the building for any reason.
- Always remember to remain calm during the entire evacuation process.

Second/Third/Fourth Floor


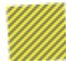
1. When alarm sounds, promptly leave room and exit building via the primary exit shown on the posted evacuation maps.
2. Use an alternate exit ONLY if the primary exit is blocked.
3. Do not use any window to exit the building. If other exit options are blocked, remain in an available stairwell until help arrives.
4. After exiting the building, proceed to the gathering area/assembly point and await further instructions.
5. Do not attempt to re-enter the building for any reason.
6. Always remember to remain calm during the entire evacuation process.

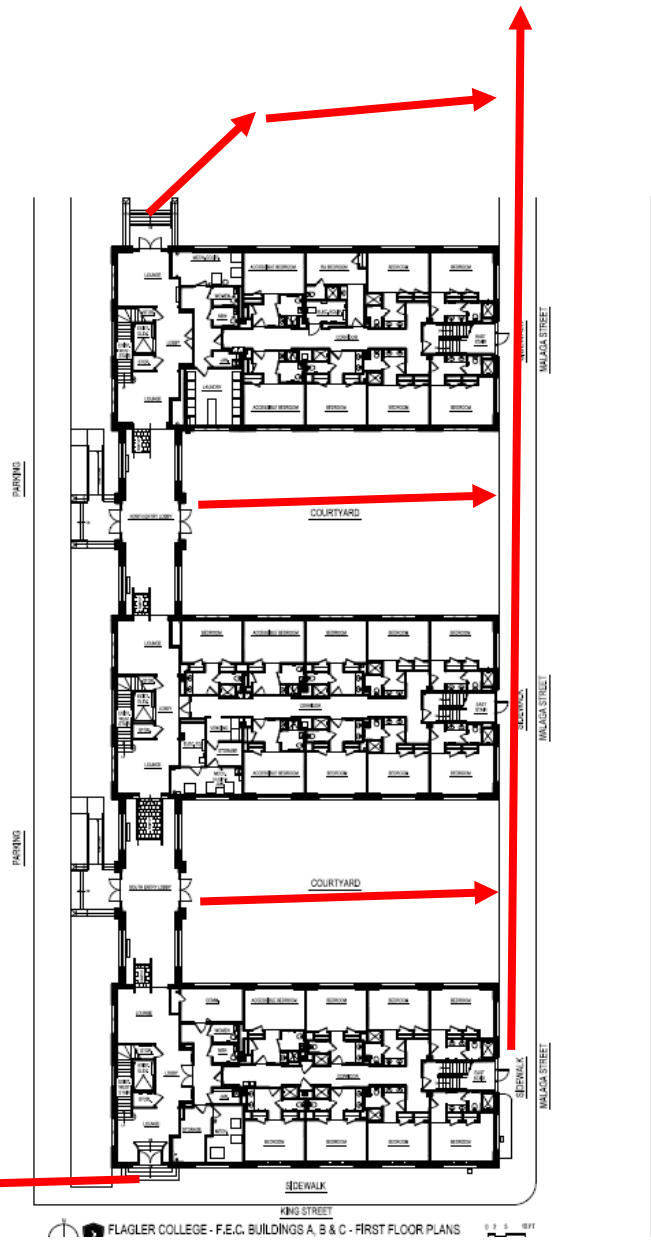
Gathering Areas/Assembly Points:

- South end of FEC, Away from the building so that all emergency vehicles can enter safely.
- FEC Parking Garage, if cleared for use by Fire and Safety officials. If not clear, proceed North on the sidewalk of Malaga Street, but be careful of Fire vehicles exiting Firehouse North of Garage
- If the only safe route is to the center courtyard and no other exit is deemed safe, muster in the furthest side from the fire and wait for authorized officials to guide you to a safer area.

Flagler College Emergency Action and Fire Safety Plan



-  = Fire Exit / stairwell
-  = Vehicle Emergency Access



Remember to stay clear of any traffic lanes that emergency vehicles may use. Only use the King St. and Malaga St. emergency exits as a last resort. Evacuate the immediate vicinity of the building but do not leave the area.

Flagler College
Emergency Action and Fire Safety Plan

Abare Hall Residences

First Floor / Lobby Level

1. When alarm sounds, promptly leave room and exit building via the primary exit shown on the posted evacuation maps.
2. Use an alternate exit ONLY if the primary exit is blocked.
3. Use a window to exit the building ONLY if the first options are blocked or unavailable. (windows should only be used as a last resort)
4. After exiting the building, proceed to the gathering area/assembly point and await further instructions.
5. Do not attempt to re-enter the building for any reason.
6. Always remember to remain calm during the entire evacuation process.

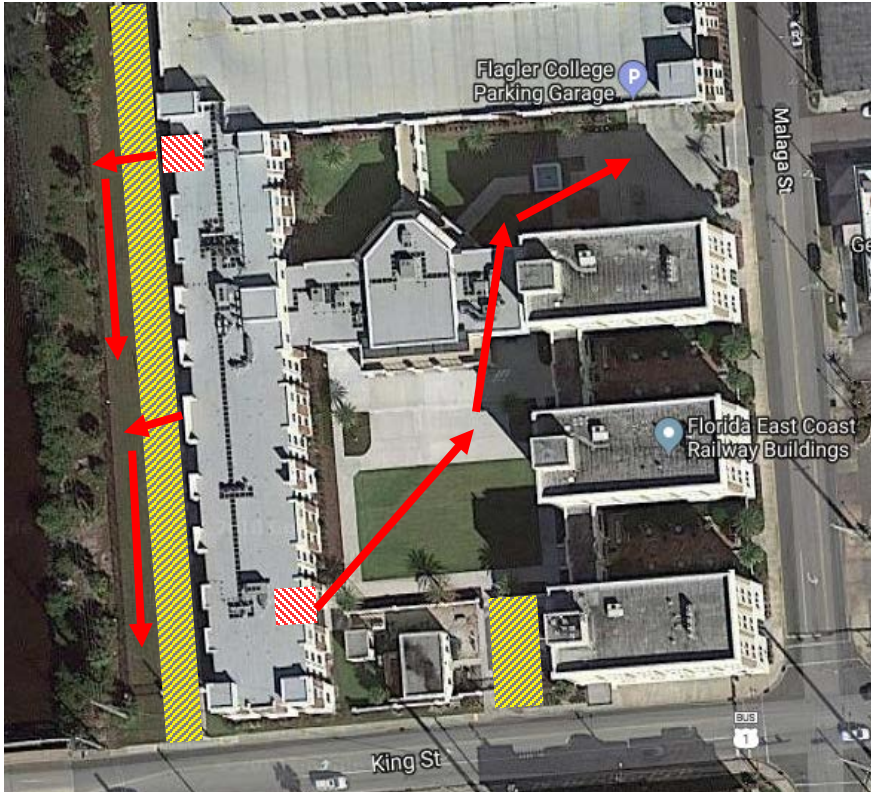
Second and Third Floor

1. When alarm sounds, promptly leave room and exit building via the primary exit shown on the posted evacuation maps. Stairwells are located North and South, either way down the hall. Locate the closest exit that is not blocked by any hazards and proceed.
2. Use an alternate exit ONLY if the primary exit is blocked.
3. Do not use any window to exit the building. If other exit options are blocked, remain in an available stairwell until help arrives.
4. After exiting the building, proceed to the gathering area/assembly point and await further instructions.
5. Do not attempt to re-enter the building for any reason.
6. Always remember to remain calm during the entire evacuation process.

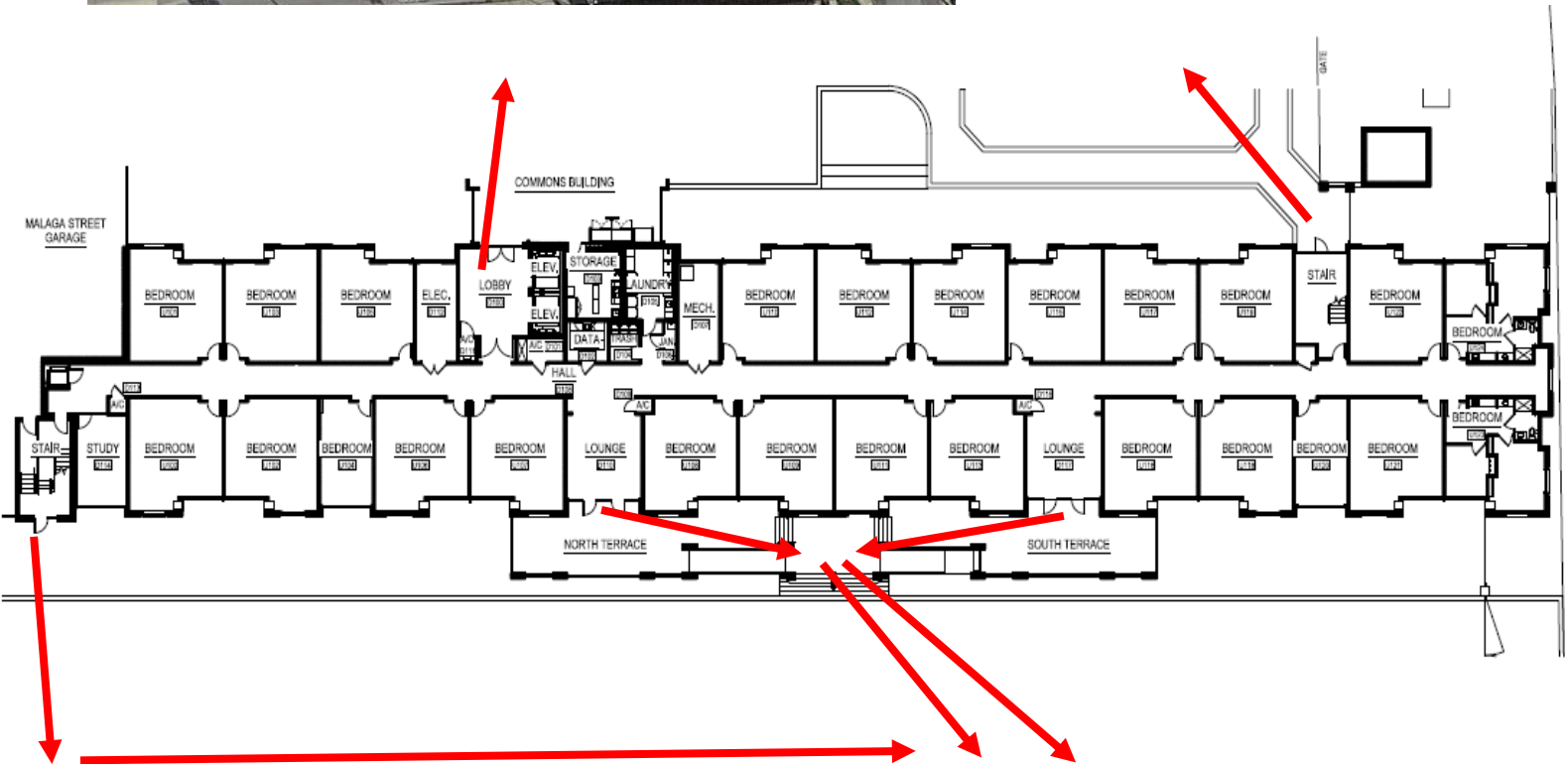
Gathering Areas/Assembly Points:

- West end of Abare Hall, along outer fence away from the building so that all emergency vehicles can enter safely down designated path
- FEC Parking Garage, if cleared for use by Fire and Safety officials. If not clear, proceed North on the sidewalk of Malaga Street, but be careful of Fire vehicles exiting Firehouse North of Garage
- If the only safe route is to the center courtyard and no other exit is deemed safe, muster in the furthest side from the fire and wait for authorized officials to guide you to a safer area.

Flagler College Emergency Action and Fire Safety Plan



- = Fire Exit / stairwell
- = Vehicle Emergency Access



Remember to stay clear of any traffic lanes that emergency vehicles may use. The brick road to the West of Abare Hall is for Emergency Vehicles to use, stay clear of this access way. Evacuate the immediate vicinity of the building but do not leave the area.

Flagler College
Emergency Action and Fire Safety Plan

Commons Building

First Floor / Lobby Level

1. When alarm sounds, promptly leave room and exit building via the primary exit shown on the evacuation maps.
2. Use an alternate exit ONLY if the primary exit is blocked.
3. Use a window to exit the building ONLY if the first options are blocked or unavailable. (windows should only be used as a last resort)
4. After exiting the building, proceed to the gathering area/assembly point and await further instructions.
5. Do not attempt to re-enter the building for any reason.
6. Always remember to remain calm during the entire evacuation process.

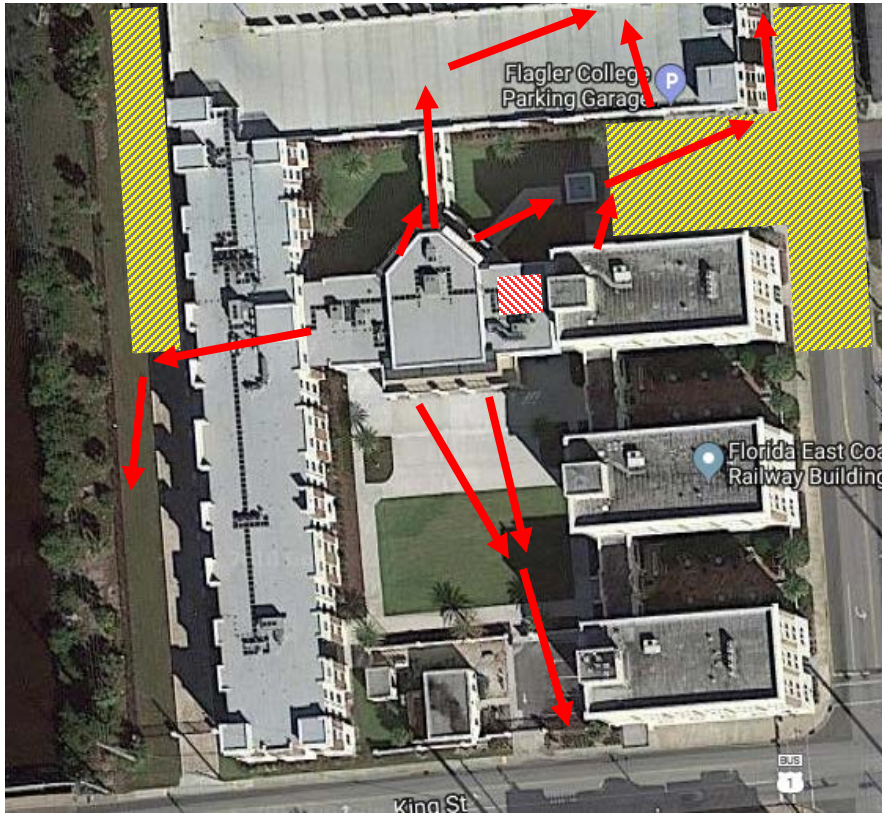
Second Floor

1. When alarm sounds, promptly leave room and exit building via the primary exit shown on the posted evacuation maps. Stairwell is located on the East end, near the fitness room, or directly out the exits on the North side to the garage.
2. If you must use Garage as an exit, DO NOT stay in garage 2nd floor. Proceed to the first floor and exit the garage, heading North, if safe.
3. Use an alternate exit ONLY if the primary exit is blocked.
4. Do not use any window to exit the building. If other exit options are blocked, remain in an available stairwell until help arrives.
5. After exiting the building, proceed to the gathering area/assembly point and await further instructions.
6. Do not attempt to re-enter the building for any reason.
7. Always remember to remain calm during the entire evacuation process.

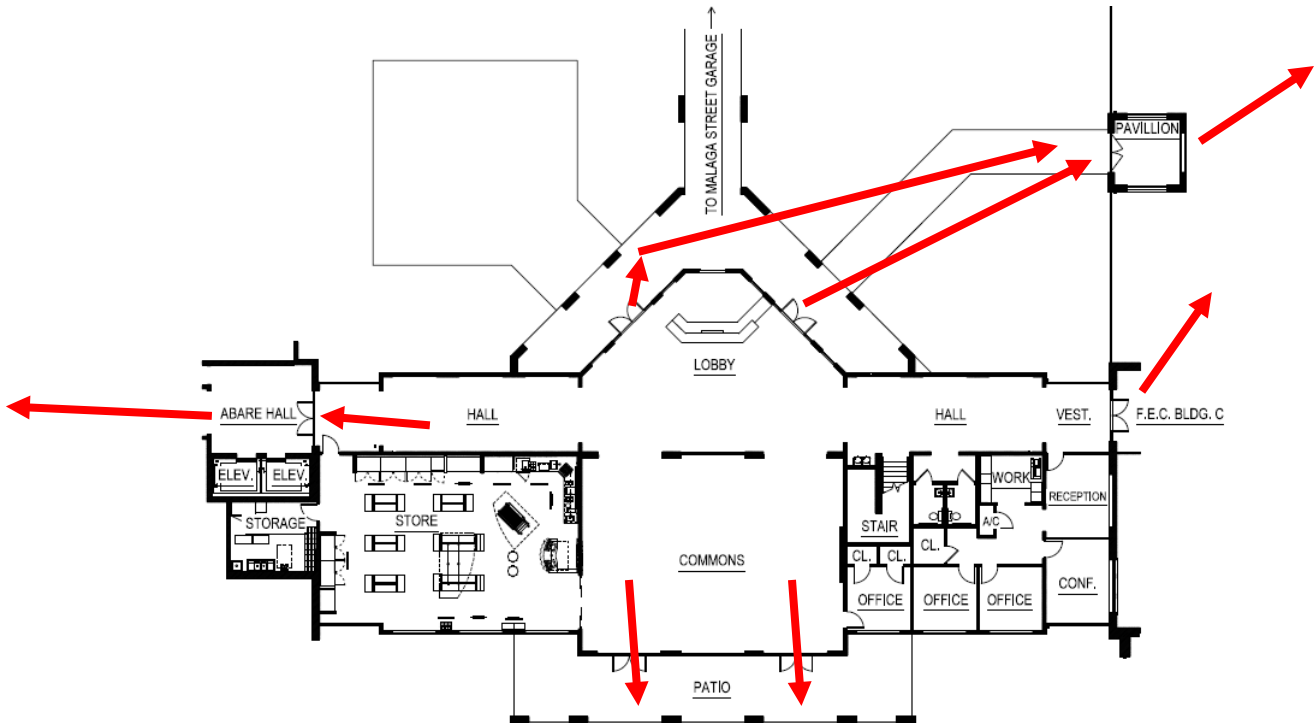
Gathering Areas/Assembly Points:

- South end of A Tower, Away from the building so that all emergency vehicles can enter safely.
- FEC Parking Garage, if cleared for use by Fire and Safety officials. If not clear, proceed North on the sidewalk of Malaga Street, but be careful of Fire vehicles exiting Firehouse North of Garage
- If the only safe route is to the center courtyard and no other exit is deemed safe, muster in the furthest side from the fire and wait for authorized officials to unlock and guide you away.
- Protocol for Security to be ready to open up any locked gates for ease of access (next to maintenance building and along King Street)

Flagler College Emergency Action and Fire Safety Plan



- = Vehicle Emergency Access
- = Fire Exit / stairwell



REMEMBER: Stay clear of any traffic lanes that emergency vehicles may use. Stay off the road of King Street and Malaga. Stay to sidewalks and pedestrian areas. Evacuate the immediate vicinity of the building but do not leave the area.

Flagler College
Emergency Action and Fire Safety Plan

FEC Garage

Lower Level

1. When alarm sounds, promptly leave the area or your car and walk to the exit of the garage via the primary exit.
 - a. Exit South toward FEC / The Commons, or exit North to the Fire Station side, and muster at least 100 ft from the building.
2. Use an alternate exit ONLY if the primary exit is blocked.
3. Use a window to exit the building ONLY if the first options are blocked or unavailable. (windows should only be used as a last resort)
4. After exiting the building, proceed to the gathering area/assembly point and await further instructions.
5. Do not attempt to re-enter the building for any reason.
6. Always remember to remain calm during the entire evacuation process.

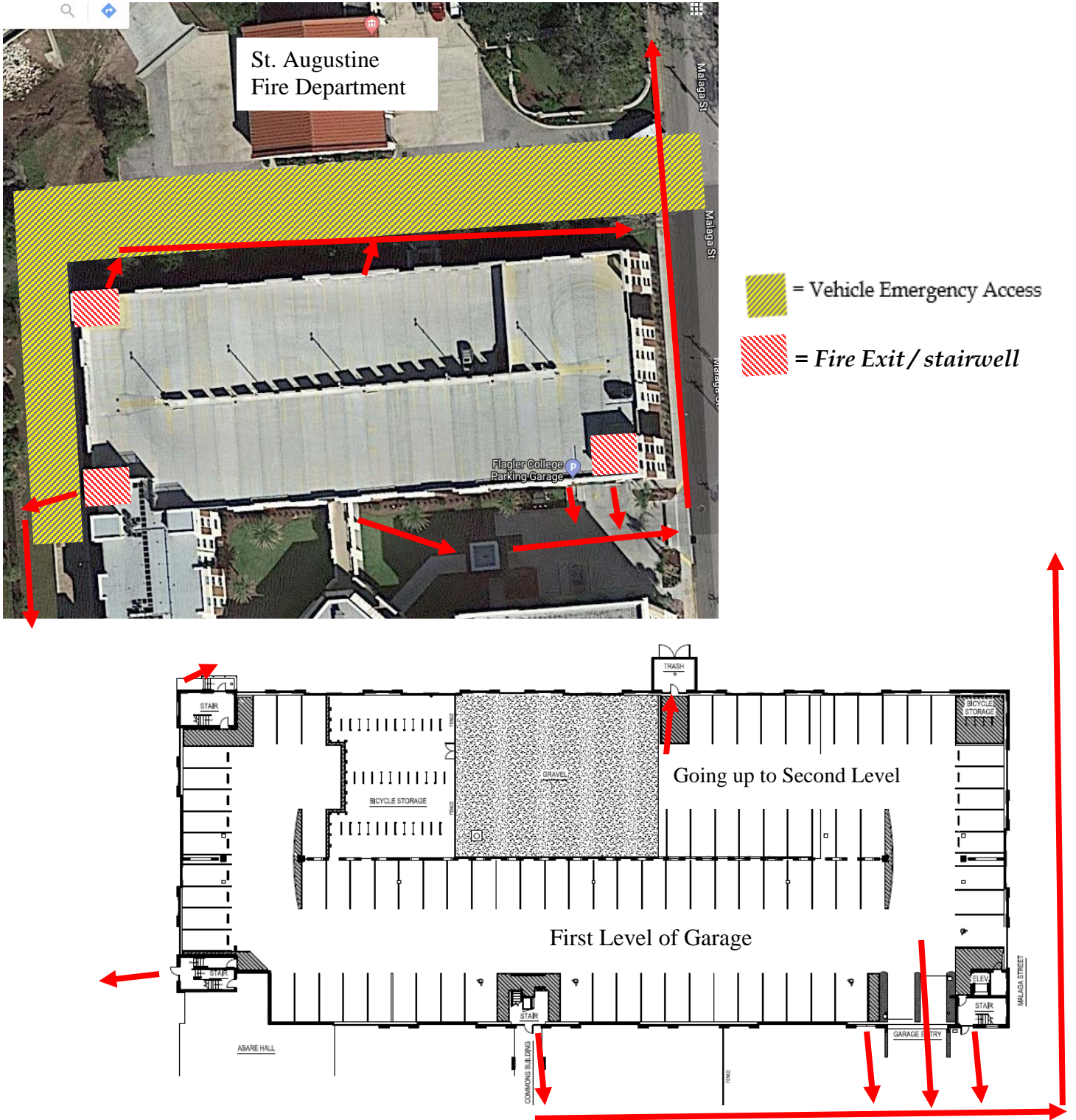
Second, Third, Fourth, Fifth Level

1. When alarm sounds, promptly leave your area or car, and walk to a stairwell via the primary exit shown on the posted evacuation maps. Stairwells Located on the East end near the elevator and West end toward the San Sebastian River
2. If you must use Garage as an exit, DO NOT stay in garage 2nd floor. Proceed to the first floor and exit the garage, heading North, if safe.
3. Use an alternate exit ONLY if the primary exit is blocked.
4. Do not use any window to exit the building. If other exit options are blocked, remain in an available stairwell until help arrives.
5. After exiting the building, proceed to the gathering area/assembly point and await further instructions.
6. Do not attempt to re-enter the building for any reason.
7. Always remember to remain calm during the entire evacuation process.

Gathering Areas/Assembly Points:

- South end of A Tower, Away from the building so that all emergency vehicles can enter safely.
- If you exit North towards the Fire Station, do not muster in the Fire Station Parking lot. Proceed to the sidewalk and Walk North towards 170 Malaga (Campus Security)

Flagler College Emergency Action and Fire Safety Plan



REMEMBER: Stay clear of any traffic lanes that emergency vehicles may use. Stay out of the Fire Station Parking lot and Malaga street. Evacuate the immediate vicinity of the building but do not leave the area.

Flagler College
Emergency Action and Fire Safety Plan

Lewis House

First Floor

1. When alarm sounds, promptly leave room and exit building via the primary exit shown on the posted evacuation maps.
 - a. Do not gather in the immediate parking areas surrounding the building. Stay clear of any impending hazards and also Emergency Responders will need clear access.
2. Use an alternate exit ONLY if the primary exit is blocked.
3. Use a window to exit the building ONLY if the first options are blocked or unavailable. (windows should only be used as a last resort)
4. After exiting the building, proceed to the gathering area/assembly point and await further instructions.
5. Do not attempt to re-enter the building for any reason.
6. Always remember to remain calm during the entire evacuation process.

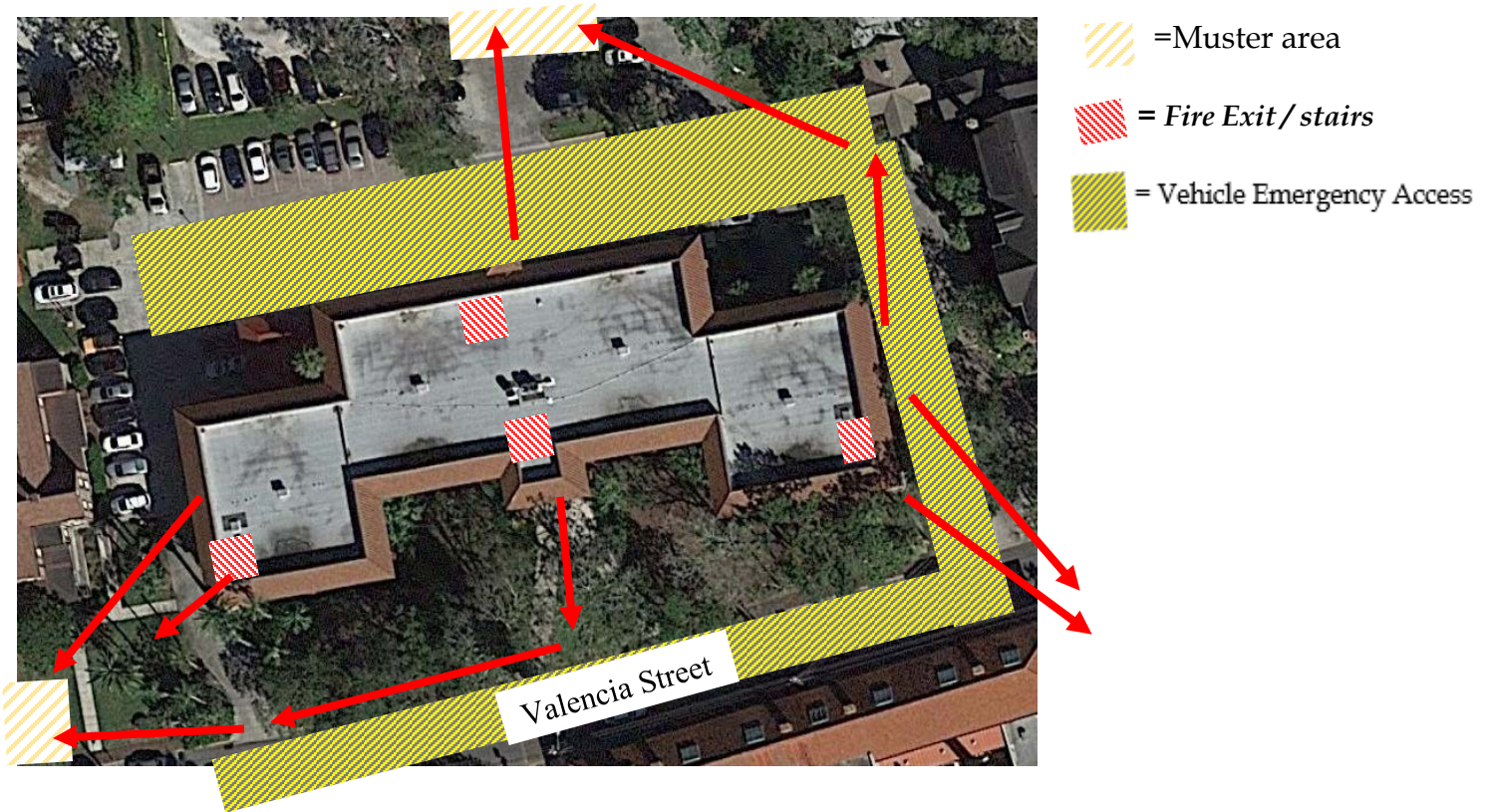
Second/Third Floor




1. When alarm sounds, promptly leave room and exit building via the primary exit shown on the posted evacuation maps.
2. Use an alternate exit ONLY if the primary exit is blocked.
3. Do not use any window to exit the building. If other exit options are blocked, remain in an available stairwell until help arrives.
4. After exiting the building, proceed to the gathering area/assembly point and await further instructions.
5. Do not attempt to re-enter the building for any reason.
6. Always remember to remain calm during the entire evacuation process.

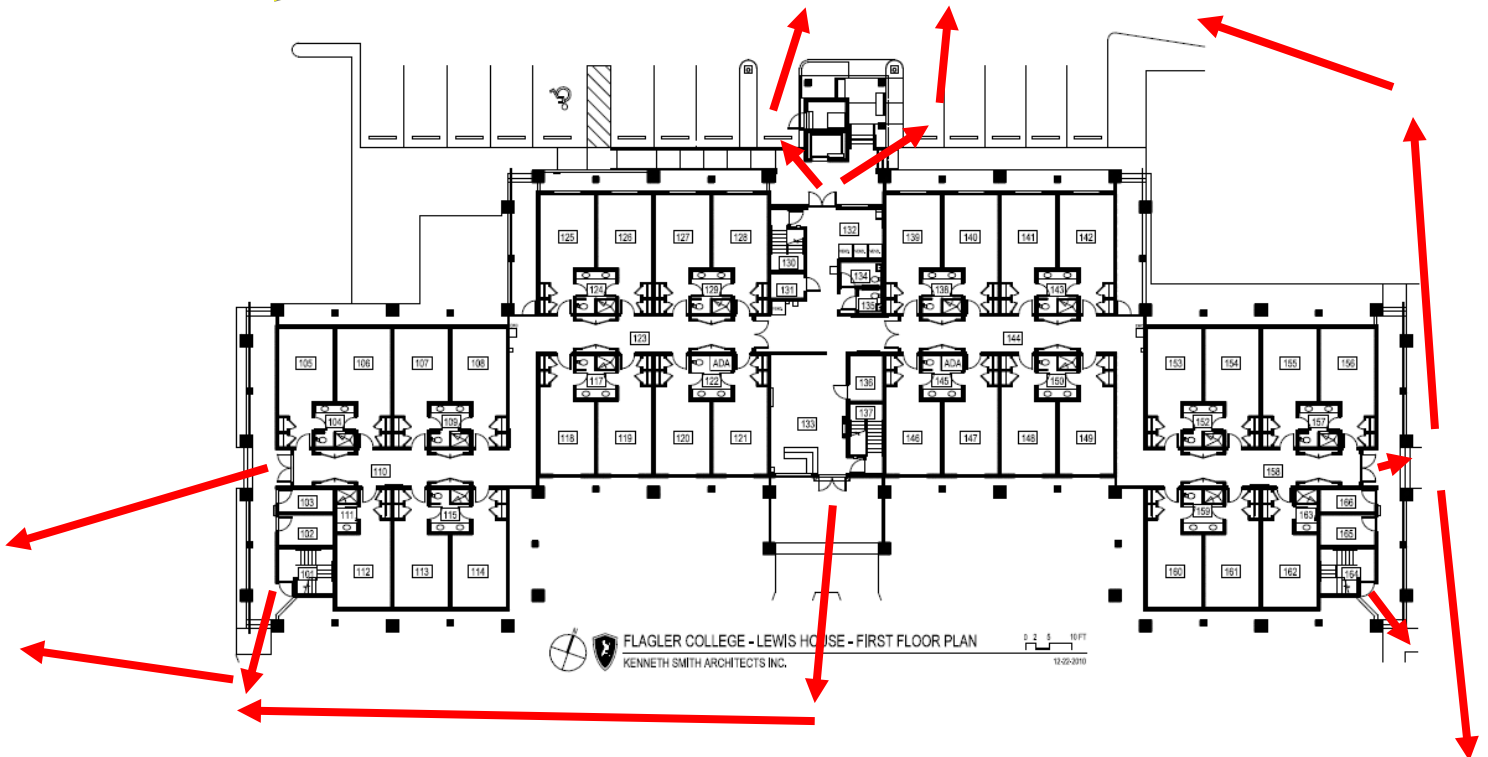
Gathering Areas/Assembly Points:

- West Lawn, across Valencia Street
- Porous Concrete parking lot on north side of Lewis House.
- South side of building in front of Business Services.

Flagler College Emergency Action and Fire Safety Plan



-  = Muster area
-  = Fire Exit / stairs
-  = Vehicle Emergency Access



REMEMBER: Stay clear of the roadway (Valencia St.) and immediate parking areas. This will most likely be the route that emergency vehicles will use. Evacuate the immediate vicinity of the building but do not leave the area.

Flagler College
Emergency Action and Fire Safety Plan

Thompson Hall

First Floor

1. When alarm sounds, promptly leave room and exit building via the primary exit shown on the posted evacuation maps.
 - a. Do not gather in the immediate parking areas surrounding the building. Stay clear of any impending hazards and also Emergency Responders will need clear access.
2. Use an alternate exit ONLY if the primary exit is blocked.
3. Use a window to exit the building ONLY if the first options are blocked or unavailable. (windows should only be used as a last resort)
4. After exiting the building, proceed to the gathering area/assembly point and await further instructions.
5. Do not attempt to re-enter the building for any reason.
6. Always remember to remain calm during the entire evacuation process.

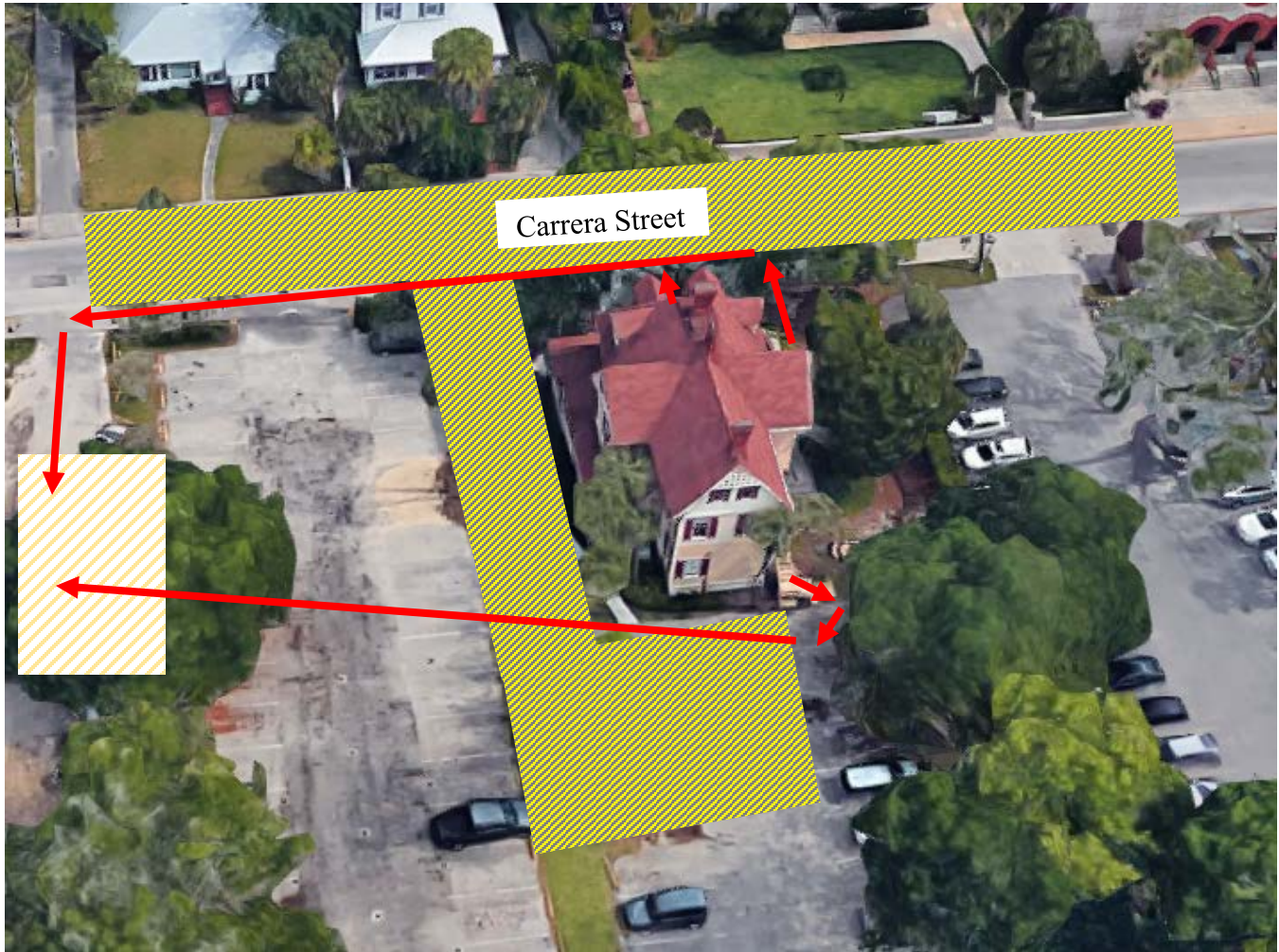
Second/Third Floor



1. When alarm sounds, promptly leave room and exit building via the primary exit shown on the posted evacuation maps.
2. Use an alternate exit ONLY if the primary exit is blocked.
3. Do not use any window to exit the building. If other exit options are blocked, remain in an available stairwell until help arrives.
4. After exiting the building, proceed to the gathering area/assembly point and await further instructions.
5. Do not attempt to re-enter the building for any reason.
6. Always remember to remain calm during the entire evacuation process


Gathering Areas/Assembly Points:

- Stone Lot to the West of Thompson hall, do not gather in immediate parking lot as to allow clear access for emergency responders
- Porous Concrete lot behind Lewis house, towards Business Services. Do not muster near Palm Cottage / Wiley because Emergency Vehicles may enter off of Valencia St through that way.

Flagler College Emergency Action and Fire Safety Plan



-  = Fire Exit / stairwell
-  = Muster (assembly) area

 = Vehicle Emergency Access

REMEMBER: Stay clear of the roadway (Carrera St.) and immediate parking areas. This will most likely be the route that emergency vehicles will use. Evacuate the immediate vicinity of the building but do not leave the area.

Flagler College
Emergency Action and Fire Safety Plan

Wiley Hall

First Floor

1. When alarm sounds, promptly leave room and exit building via the primary exit shown on the posted evacuation maps.
 - a. Do not gather in the immediate parking areas surrounding the building.
2. Use an alternate exit ONLY if the primary exit is blocked.
3. Use a window to exit the building ONLY if the first options are blocked or unavailable. (windows should only be used as a last resort)
4. After exiting the building, proceed to the gathering area/assembly point and await further instructions.
5. Do not attempt to re-enter the building for any reason.
6. Always remember to remain calm during the entire evacuation process.

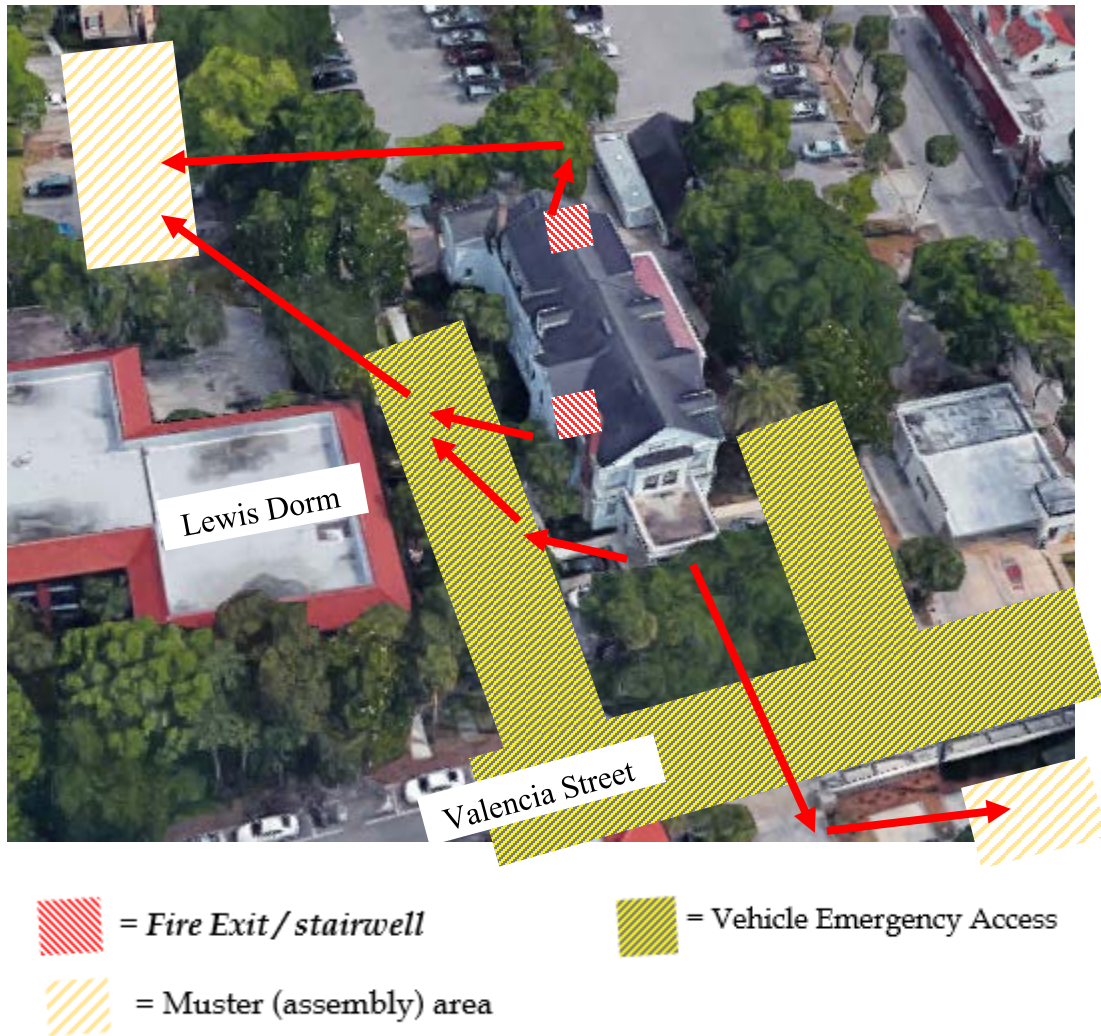
Second/Third Floor

1. When alarm sounds, promptly leave room and exit building via the primary exit shown on the posted evacuation maps.
2. Use an alternate exit ONLY if the primary exit is blocked.
3. Do not use any window to exit the building. If other exit options are blocked, remain in an available stairwell until help arrives.
4. After exiting the building, proceed to the gathering area/assembly point and await further instructions.
5. Do not attempt to re-enter the building for any reason.
6. Always remember to remain calm during the entire evacuation process.

Gathering Areas/Assembly Points:

- Porous Concrete lot behind Lewis house, towards Business Services. Do not muster near Palm Cottage / Wiley because Emergency Vehicles may enter off of Valencia St through that way.
- Kenan Hall Parking lot, towards Cordova Street. Be cautious crossing the road, and especially careful for Emergency Responder vehicles

Flagler College Emergency Action and Fire Safety Plan



REMEMBER: Stay clear of the roadway (Valencia St.) and immediate parking areas. This will most likely be the route that emergency vehicles will use. Evacuate the immediate vicinity of the building but do not leave the area.

Flagler College
Emergency Action and Fire Safety Plan

Art Building

First Floor

1. When alarm sounds, promptly leave room/office and exit building via the primary exit shown on the posted evacuation maps.
2. Use an alternate exit ONLY if the primary exit is blocked.
3. Use a window to exit the building ONLY if the first options are blocked or unavailable. (windows should only be used as a last resort)
4. After exiting the building, proceed to the closest gathering area/assembly point and await further instructions.
5. Do not attempt to re-enter the building for any reason.
6. Always remember to remain calm during the entire evacuation process.

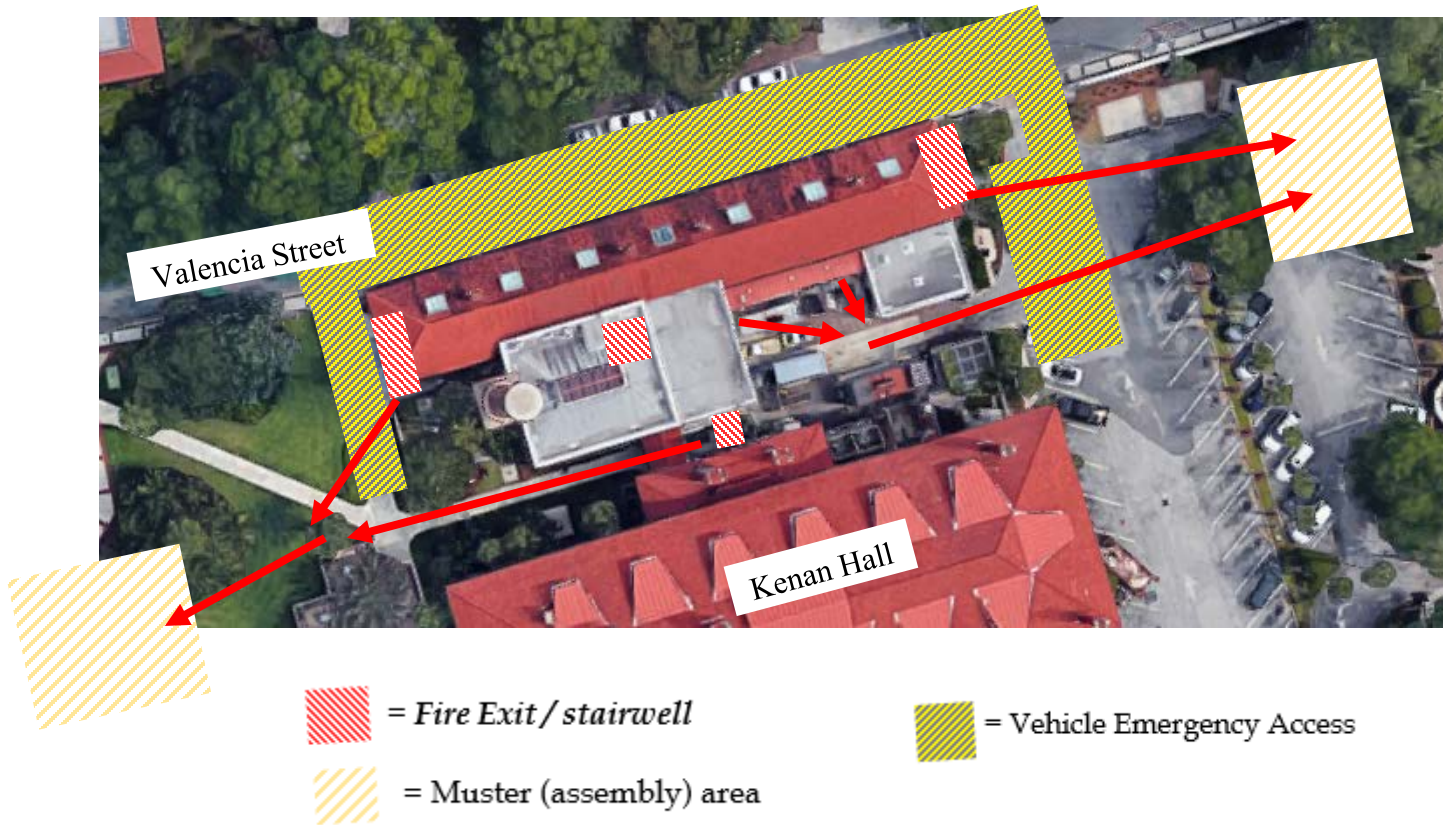
Second Floor

1. When alarm sounds, promptly leave room and exit building via the primary exit shown on the posted evacuation maps.
2. Use an alternate exit ONLY if the primary exit is blocked.
3. Do not use any window to exit the building. If other exit options are blocked, remain in an available stairwell until help arrives.
4. After exiting the building, proceed to the gathering area/assembly point and await further instructions.
5. Do not attempt to re-enter the building for any reason.
6. Always remember to remain calm during the entire evacuation process.

Gathering Areas/Assembly Points:

- If exiting to Valencia side / North West side porch, proceed to West Lawn, past the Gazebo, along Sevilla
- If exiting through the maintenance compound / Eastern side, proceed east towards Cordova street and muster inside the wall for Kenan Parking lot.

Flagler College Emergency Action and Fire Safety Plan



REMEMBER: It is extremely important to completely exit the building and stay out of roadways. Do not gather on the porch or in the stairwells, and stay clear of roadways (Valencia and Cordova) and main parking lot entrance. Emergency Vehicles will be traveling and accessing the building from either side. Stay to the West Lawn or Far side of Kenan Parking lot along the wall.

Flagler College
Emergency Action and Fire Safety Plan

Kenan Hall

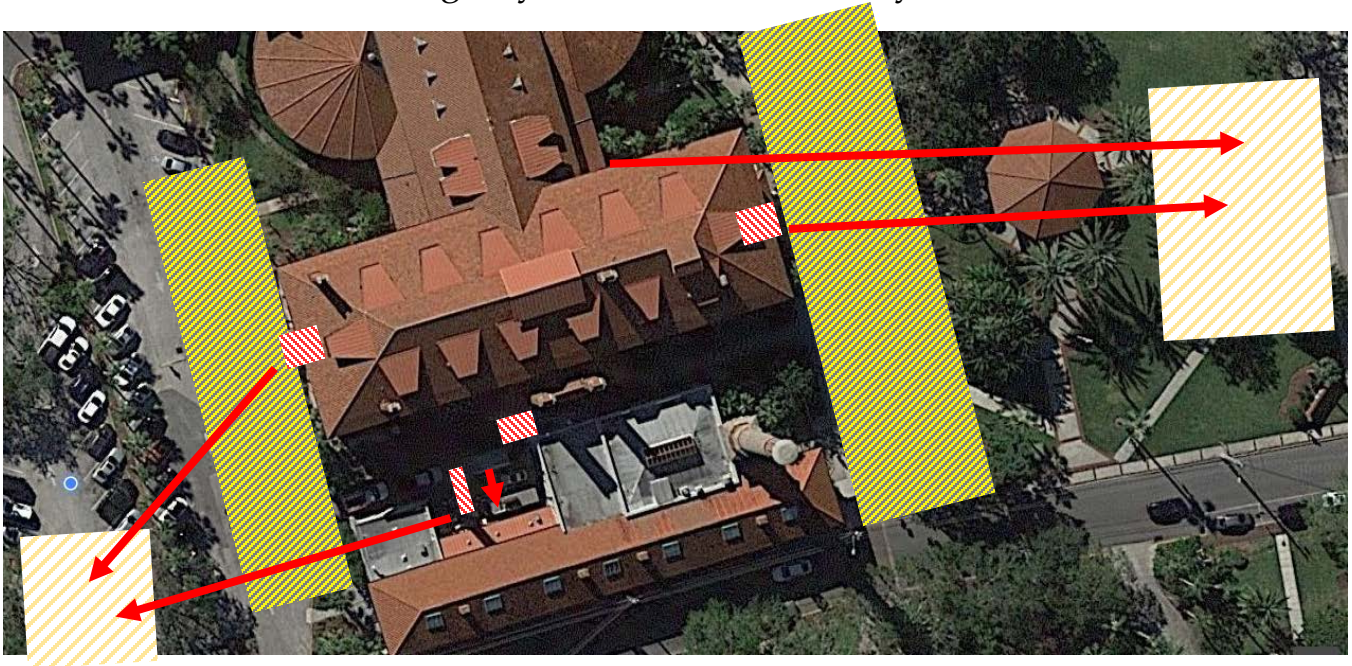
All Floors

1. When alarm sounds, promptly leave room/office and exit building via the primary exit shown on the posted evacuation maps.
 - a. Exterior exits are located through the ground floor stairwell corridor on the East and West end of Kennan Hall.
 - i. DO NOT ASSEMBLE ON PORCHES / PATIOS
 - b. There is a central exit in between Science Labs 109 and 111 that lead to the breezeway.
 - i. If you exit through the breezeway, you must exit to the West lawn or Kenan Parking Lot. Preferable to go to the West Lawn past the Gazebo.
 - ii. DO NOT ASSEMBLE IN BREEZEWAY
 - c. Second Floor Emergency Corridor should be used if primary stairwell is not accessible.
2. Use an alternate exit ONLY if the primary exit is blocked.
3. Use a window to exit the building ONLY if the primary and secondary options are blocked or unavailable. (windows should only be used as a last resort)
4. After exiting the building, proceed to the closest gathering area/assembly point and await further instructions.
5. Do not attempt to re-enter the building for any reason.
6. Always remember to remain calm during the entire evacuation process.
7. Use the offices/classrooms located in the center of each floor's corridor as the line of demarcation to separate east and west ends.

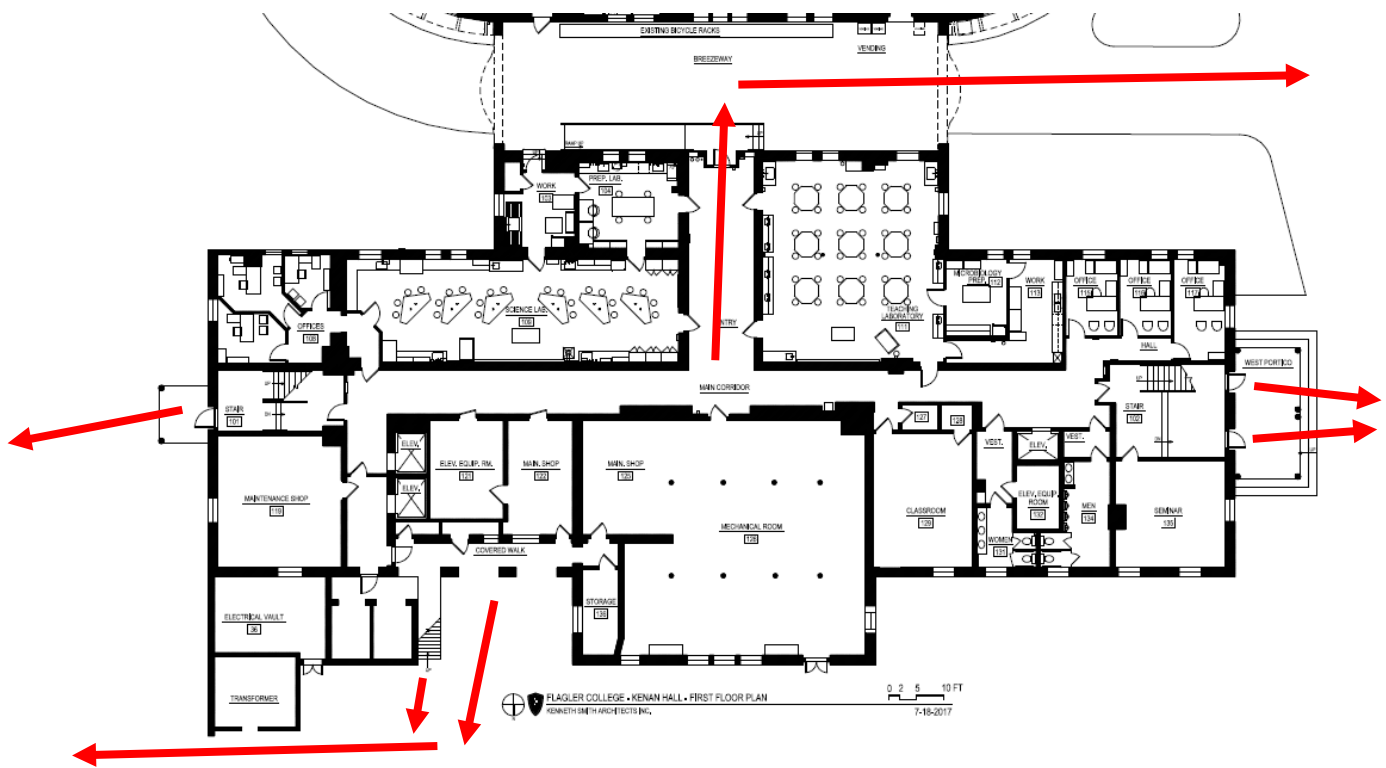
Gathering Areas/Assembly Points:

- If exiting to the parking lot side of Kenan Hall, proceed to the easternmost portion of the parking lot. This will allow all rescue vehicles easy access to the lot.
- If you are exiting from the Second or Third Floor Emergency stairwell or Corridor, do not stay inside the maintenance compound once you are on ground level. Exit to the Kenan Parking lot far side, denoted on the map
- If exiting to the West plaza side of Kenan Hall, proceed beyond the plaza and gather at, or as near as possible to, the Gazebo. You must stay on the furthest end of the Gazebo, as to keep space from the potential hazards of the fire or other reason for evacuation.
- If you are exiting to the breezeway between Ponce and Kenan, DO NOT stay in the breezeway. Exit immediately and proceed towards the West Lawn if possible.
- Avoid Kenan Parking Lot if West Lawn Muster point is closer

Flagler College Emergency Action and Fire Safety Plan



= Vehicle Emergency Access
 = Fire Exit / stairwell
 = Muster (assembly) area



REMEMBER: It is extremely important to completely exit the building. Do not gather on the porches, breezeway, Plaza or in the maintenance compound. This will cause a backlog of people attempting to exit the building, and may cause a panic. Evacuate the immediate vicinity of the building but do not leave the area.

Flagler College
Emergency Action and Fire Safety Plan

Pollard Hall / 66 Cuna / Radio Station

First Floor

1. When alarm sounds, promptly leave room and exit building via the primary exit shown on the posted evacuation maps.
2. Use an alternate exit ONLY if the primary exit is blocked.
3. Use a window to exit the building ONLY if the first options are blocked or unavailable. (windows should only be used as a last resort)
4. After exiting the building, proceed to the gathering area/assembly point and await further instructions.
5. Do not attempt to re-enter the building for any reason.
6. Always remember to remain calm during the entire evacuation process.

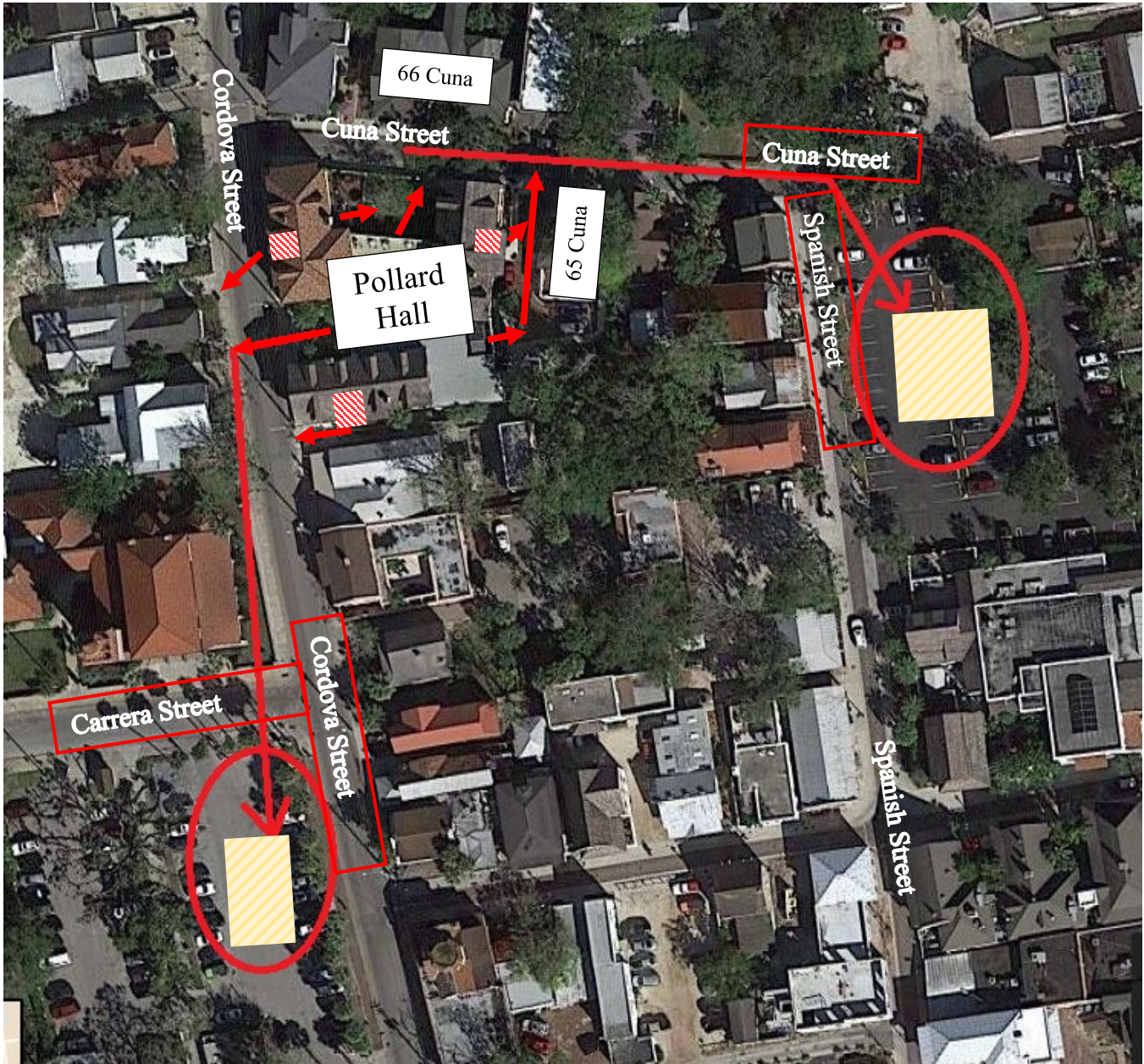
Second Floor



1. When alarm sounds, promptly leave room and exit building via the primary exit shown on the posted evacuation maps.
2. Use an alternate exit ONLY if the primary exit is blocked.
3. Do not use any window to exit the building. If other exit options are blocked, remain in an available stairwell until help arrives.
4. After exiting the building, proceed to the gathering area/assembly point and await further instructions.
5. Do not attempt to re-enter the building for any reason.
6. Always remember to remain calm during the entire evacuation process.

Gathering Areas/Assembly Points:

- Intersection of Cordova / Carrera - Public Parking Lot (Northeast of Wiley Hall, across from the Methodist Church)
- Intersection of Cuna and Spanish Street - Public Parking next to Columbia Restaurant

Flagler College
Emergency Action and Fire Safety Plan



-  = Fire Exit / stairwell
-  = Muster (assembly) area

REMEMBER: Stay clear of the roadways (Cordova, Carrera, and Cuna) as Emergency Vehicles will be traveling and accessing the building from either side. Stay to the sidewalks and parking lots once you've reached a safe distance. Evacuate the immediate vicinity of the building but do not leave the area.

Flagler College
Emergency Action and Fire Safety Plan

Hanke Hall

First Floor

7. When alarm sounds, promptly leave room/office and exit building via the primary exit shown on the posted evacuation maps.
8. Use an alternate exit ONLY if the primary exit is blocked.
9. Use a window to exit the building ONLY if the first options are blocked or unavailable. (windows should only be used as a last resort)
10. After exiting the building, proceed to the closest gathering area/assembly point and await further instructions.
11. Do not attempt to re-enter the building for any reason.
12. Always remember to remain calm during the entire evacuation process.

Second/Third Floor



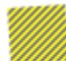
7. When alarm sounds, promptly leave room and exit building via the primary exit shown on the posted evacuation maps.
8. Use an alternate exit ONLY if the primary exit is blocked.
9. Do not use any window to exit the building. If other exit options are blocked, remain in an available stairwell until help arrives.
10. After exiting the building, proceed to the gathering area/assembly point and await further instructions.
11. Do not attempt to re-enter the building for any reason.
12. Always remember to remain calm during the entire evacuation process.

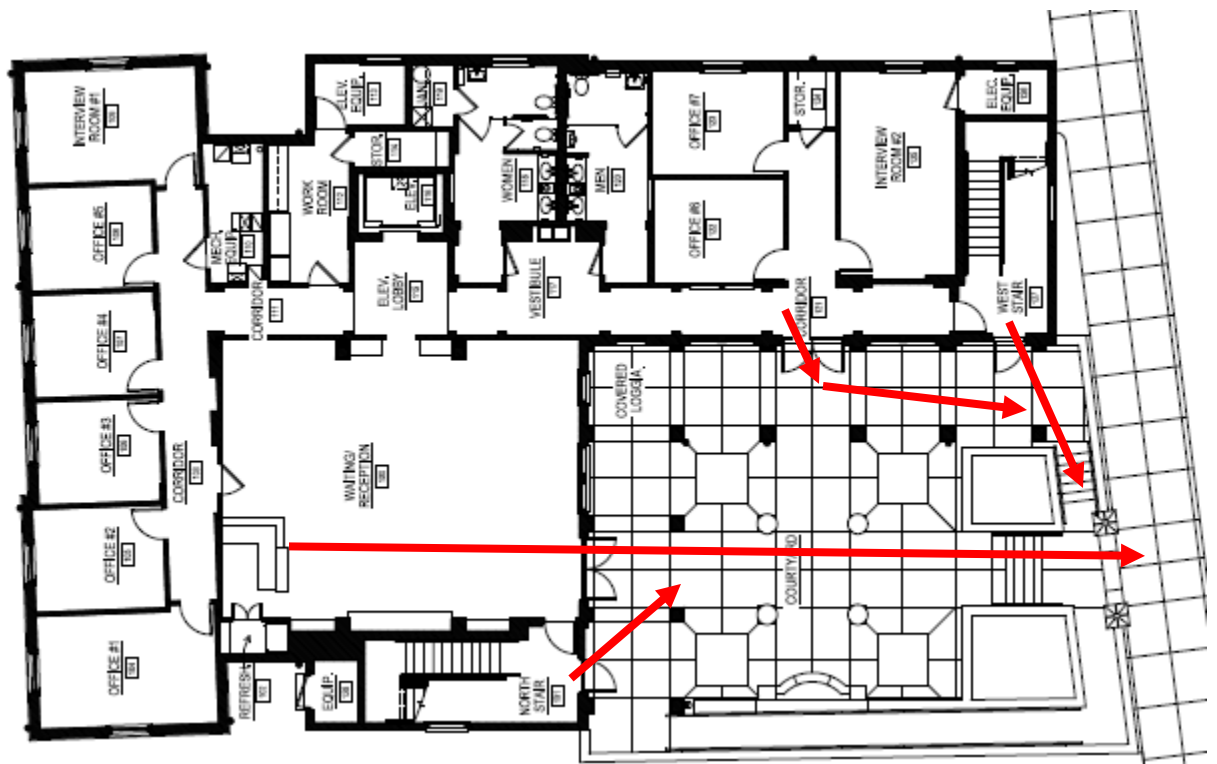
Gathering Areas/Assembly Points:

- If exiting to Valencia / Cordova Street, proceed toward Kenan Hall, to the south western most portion of the parking lot. This will allow all rescue vehicles easy access to the lot.
- If exiting to the East, or

Flagler College Emergency Action and Fire Safety Plan



-  = Fire Exit / stairwell
-  = Muster (assembly) area
-  = Vehicle Emergency Access



REMEMBER: It is extremely important to completely exit the building and stay. Do not gather on the patios or in the stairwell, and stay clear of roadways (Cordova and Treasury) as Emergency Vehicles will be traveling and accessing the building from either side. Stay to the sidewalks and parking lots once you've reached a safe distance. Evacuate the immediate vicinity of the building but do not leave the area.

Flagler College
Emergency Action and Fire Safety Plan

Proctor Library

First Floor

1. When alarm sounds, promptly leave room/office/area and exit building via the primary exit shown on the posted evacuation maps. More than likely you will exit the main entrance/exit.
2. Use an alternate exit ONLY if the primary exit is blocked.
3. Use a window to exit the building ONLY if the first options are blocked or unavailable. (windows should only be used as a last resort)
4. After exiting the building, proceed to the closest gathering area/assembly point and await further instructions.
5. Do not attempt to re-enter the building for any reason.
6. Always remember to remain calm during the entire evacuation process.

Second/Third Floor



1. When alarm sounds, promptly leave room/area and exit building via the primary exit shown on the posted evacuation maps.
2. Use an alternate exit ONLY if the primary exit is blocked.
3. Do not use any window to exit the building. If other exit options are blocked, remain in an available stairwell until help arrives.
4. After exiting the building, proceed to the gathering area/assembly point and await further instructions.
5. Do not attempt to re-enter the building for any reason.
6. Always remember to remain calm during the entire evacuation process.

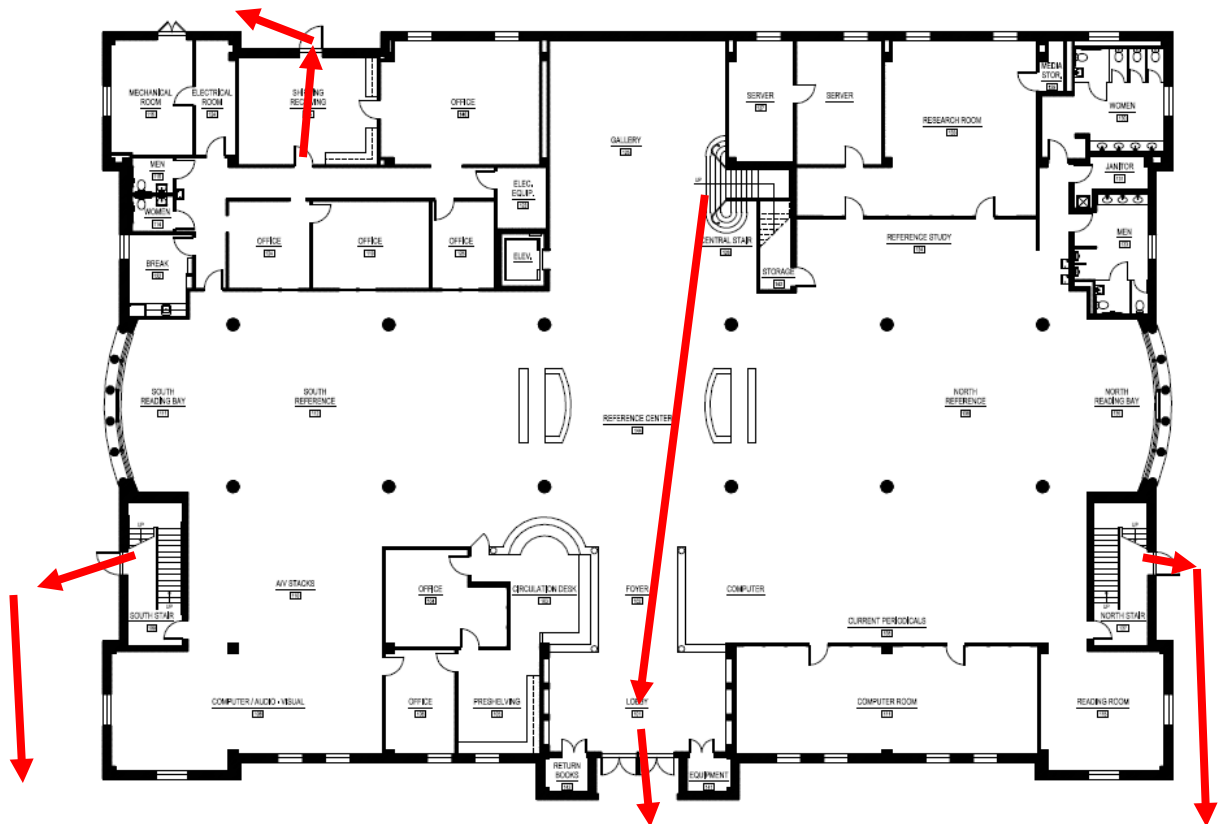
Gathering Areas/Assembly Points:

- If exiting to the parking lot side of Kenan Hall, proceed to the easternmost portion of the parking lot. This will allow all rescue vehicles easy access to the lot.
- If exiting to the plaza side of Kenan Hall, proceed beyond the plaza and gather at, or as near as possible to, the Gazebo.

Flagler College Emergency Action and Fire Safety Plan



-  = Fire Exit / stairwell
-  = Muster (assembly) area



REMEMBER: It is extremely important to completely exit the building. Do not gather on or near stairwells, proceed to gathering areas ASAP. Stay off of Sevilla Street and Valencia Street. Evacuate the immediate vicinity of the building but do not leave the area.

Flagler College
Emergency Action and Fire Safety Plan

Ringhaver Student Center

First Floor

1. When alarm sounds, promptly leave room/office/area and exit building at the nearest outer door marked with an EXIT sign.
 - a. There are the main East exits along Sevilla St, South exits along King Street, West Exits toward Markland and North Exits toward Anderson Cottage / Crisp Ellert Museum.
2. Use an alternate exit ONLY if the primary exit is blocked.
3. Use a window to exit the building ONLY if the first options are blocked or unavailable. (windows should only be used as a last resort)
4. After exiting the building, proceed to the closest gathering area/assembly point and await further instructions.
5. Do not attempt to re-enter the building for any reason.
6. Always remember to remain calm during the entire evacuation process.

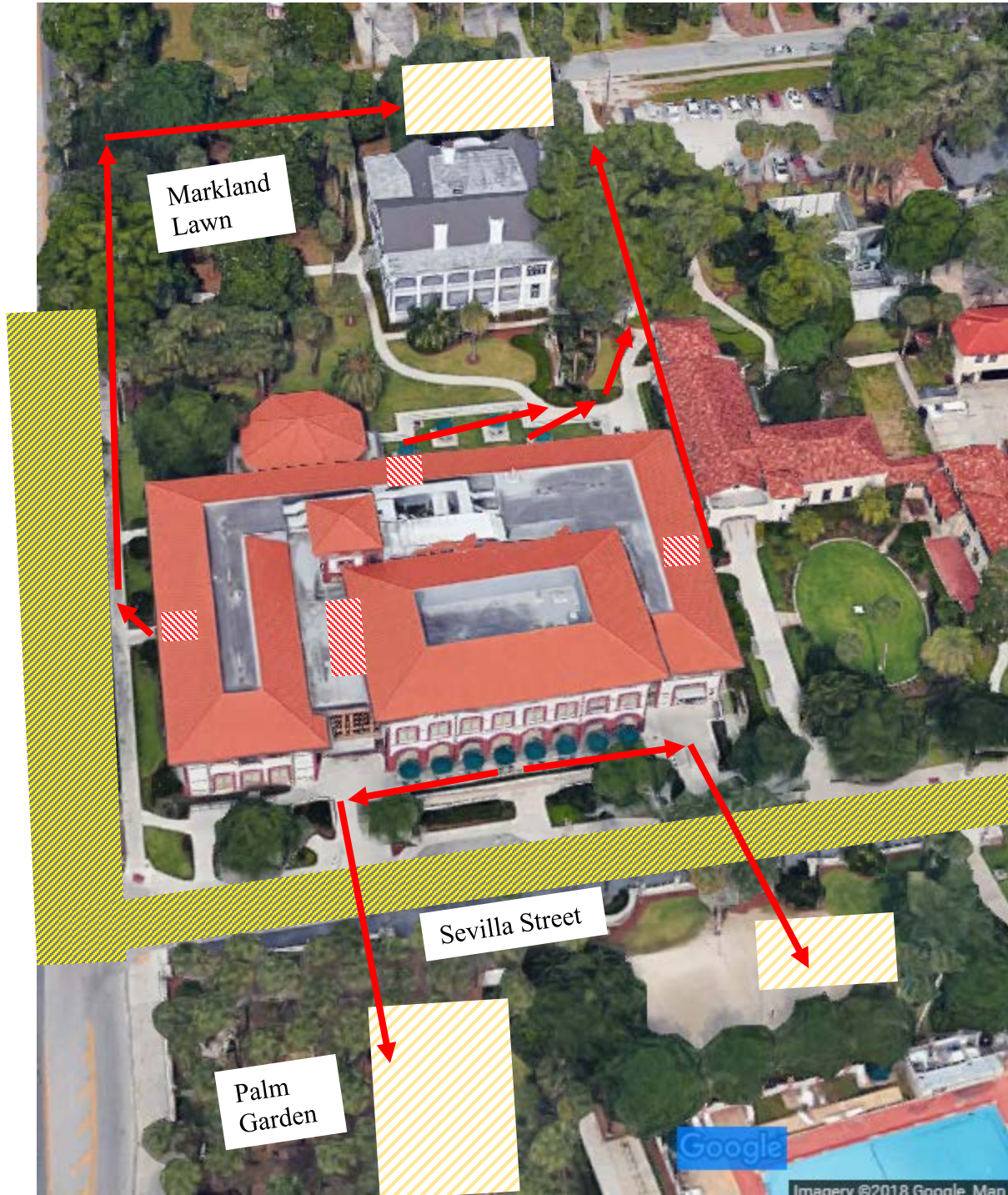
Second / Third Floor (Roof)


1. When alarm sounds, promptly leave room and exit building via the primary exit shown on the posted evacuation maps.
2. Use an alternate exit ONLY if the primary exit is blocked.
3. Do not use any window to exit the building. If other exit options are blocked, remain in an available stairwell until help arrives.
4. After exiting the building, proceed to the gathering area/assembly point and await further instructions.
5. Do not attempt to re-enter the building for any reason.
6. Always remember to remain calm during the entire evacuation process.


Gathering Areas/Assembly Points:


- If Exiting the front of the building, cross Sevilla Street to the Palm Garden / Volleyball area
- If exiting the rear (toward Markland) continue to the West side of Markland House by the along Markland Place / Parking Lot
- If exiting either side of the student center, to the North or South, continue out toward Markland Parking lot or the lawn in front of Markland and stay clear of the building.

Flagler College Emergency Action and Fire Safety Plan

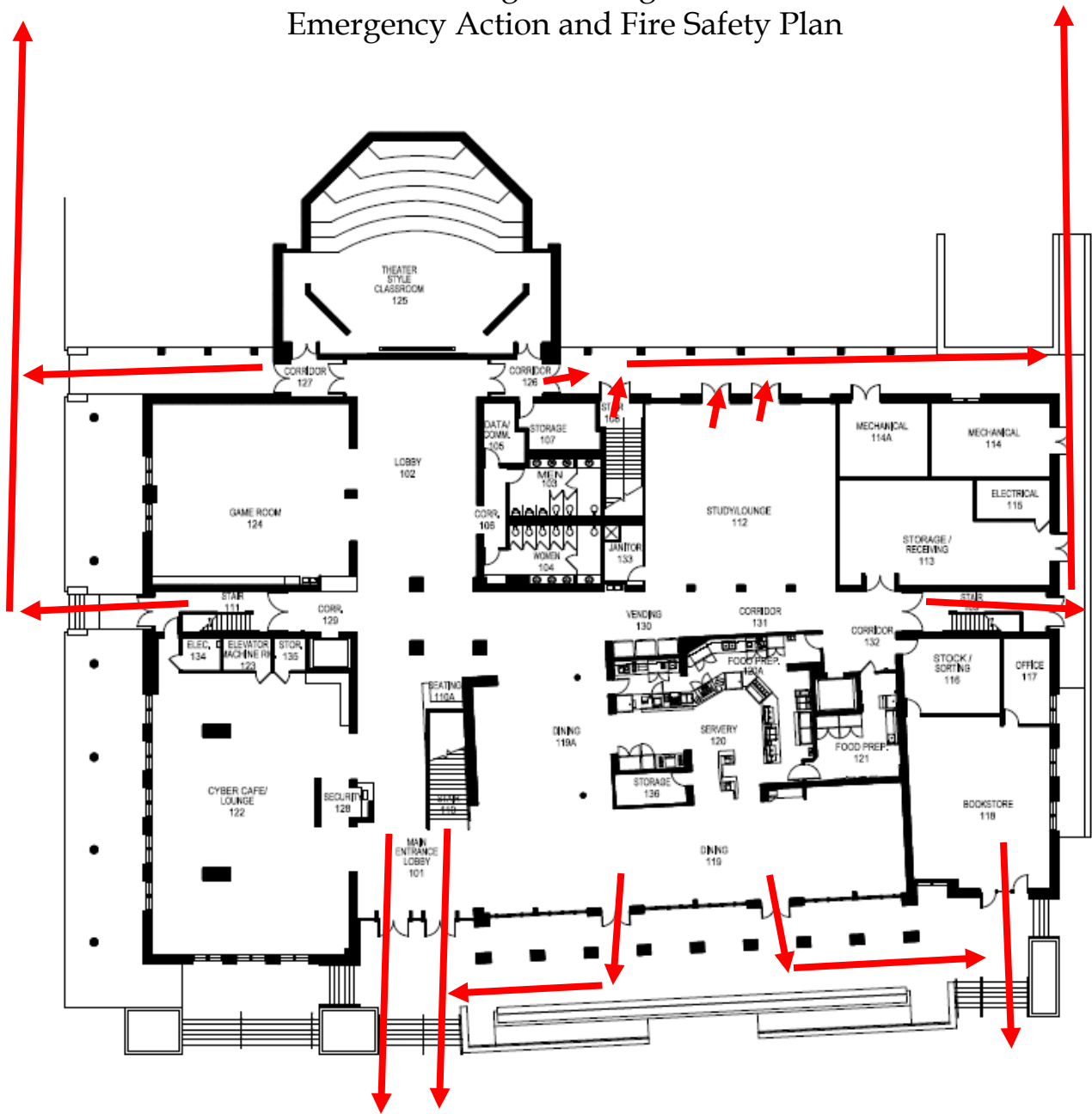


 = Vehicle Emergency Access

 = Fire Exit / stairwell

 = Muster (assembly) area

Flagler College Emergency Action and Fire Safety Plan



REMEMBER: It is extremely important to completely exit the building. Do not gather on or near stairwells, proceed to gathering areas ASAP. Stay off of Sevilla Street and King Street. Evacuate the immediate vicinity of the building but do not leave the area.

Flagler College
Emergency Action and Fire Safety Plan

Markland House

First Floor

1. When alarm sounds, promptly leave room and exit building via the primary exit shown on the posted evacuation maps.
 - a. Do not gather in the immediate parking areas surround the building. Stay clear of any impending hazards, let Emergency Responders will need clear access.
2. Use an alternate exit ONLY if the primary exit is blocked.
3. Use a window to exit the building ONLY if the first options are blocked or unavailable. (windows should only be used as a last resort)
4. After exiting the building, proceed to the gathering area/assembly point and await further instructions.
5. Do not attempt to re-enter the building for any reason.
6. Always remember to remain calm during the entire evacuation process.

Second Floor


1. When alarm sounds, promptly leave room and exit building via the primary exit shown on the posted evacuation maps.
2. Use an alternate exit ONLY if the primary exit is blocked.
3. Do not use any window to exit the building. If other exit options are blocked, remain in an available stairwell until help arrives.
4. After exiting the building, proceed to the gathering area/assembly point and await further instructions.
5. Do not attempt to re-enter the building for any reason.
6. Always remember to remain calm during the entire evacuation process.


Gathering Areas/Assembly Points:

- North end of Markland Parking lot near the Archeology cottage and rear of Proctor Library, keep at least 300 ft.
- South end of Student center / Markland Lawn by King Street. If needed proceed to the front of Student Center to the Palm Garden. Try not to gather in the front of Markland lawn on the corner of Markland Place and King Street, as smoke or fumes may drift under the tree canopy.

Flagler College Emergency Action and Fire Safety Plan



 = Muster (assembly) area

 = Vehicle Emergency Access

REMEMBER: Stay clear of the roadway (King Street and Markland Place.) and immediate parking areas. This will most likely be the route that emergency vehicles will use. Evacuate the immediate vicinity of the building but do not leave the area.

Flagler College
Emergency Action and Fire Safety Plan

74 Riberia Street

First Floor

1. When alarm sounds, promptly leave room/office and exit building via the primary exit shown on the evacuation maps.
2. Use an alternate exit ONLY if the primary exit is blocked.
3. Use a window to exit the building ONLY if the first options are blocked or unavailable. (windows should only be used as a last resort)
4. After exiting the building, proceed to the closest gathering area/assembly point and await further instructions.
5. Do not attempt to re-enter the building for any reason.
6. Always remember to remain calm during the entire evacuation process.

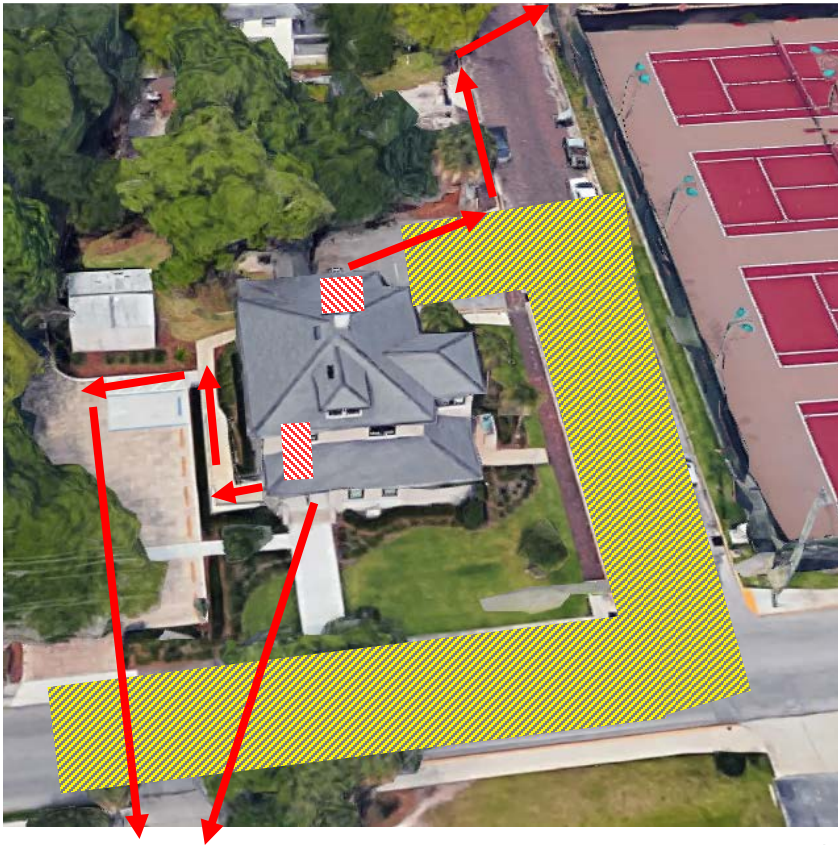
Second Floor



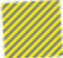
1. When alarm sounds, promptly leave room and exit building via the primary exit shown on the posted evacuation maps.
2. Use an alternate exit ONLY if the primary exit is blocked.
3. Do not use any window to exit the building. If other exit options are blocked, remain in an available stairwell until help arrives.
4. After exiting the building, proceed to the gathering area/assembly point and await further instructions.
5. Do not attempt to re-enter the building for any reason.
6. Always remember to remain calm during the entire evacuation process.

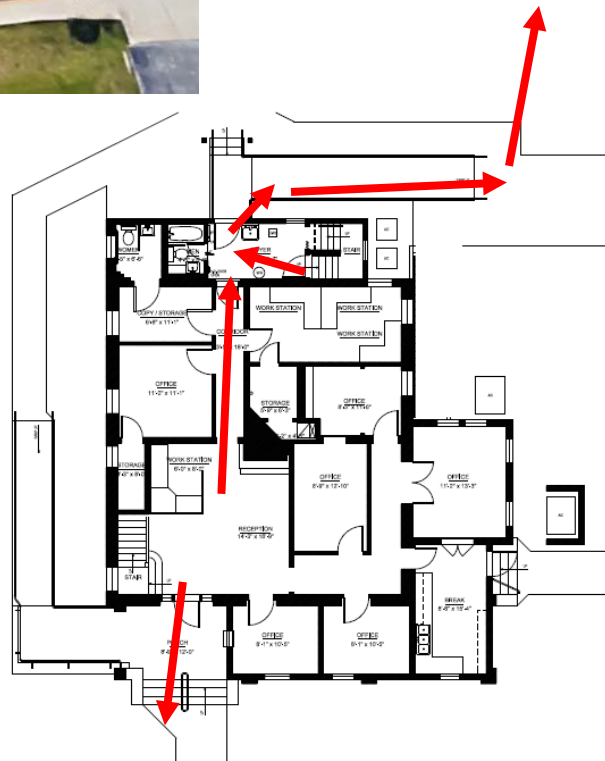
Gathering Areas/Assembly Points:

- If exiting to Riberia Street, gather in the parking lot across the street. Be cautious of traffic and emergency vehicles
- If Exiting West, towards the paint shop / Oviedo Street, cross the street by the Tennis Complex and assemble in the grass area between the tennis courts and old Church

Flagler College Emergency Action and Fire Safety Plan



-  = Fire Exit / stairwell
-  = Muster (assembly) area
-  = Vehicle Emergency Access



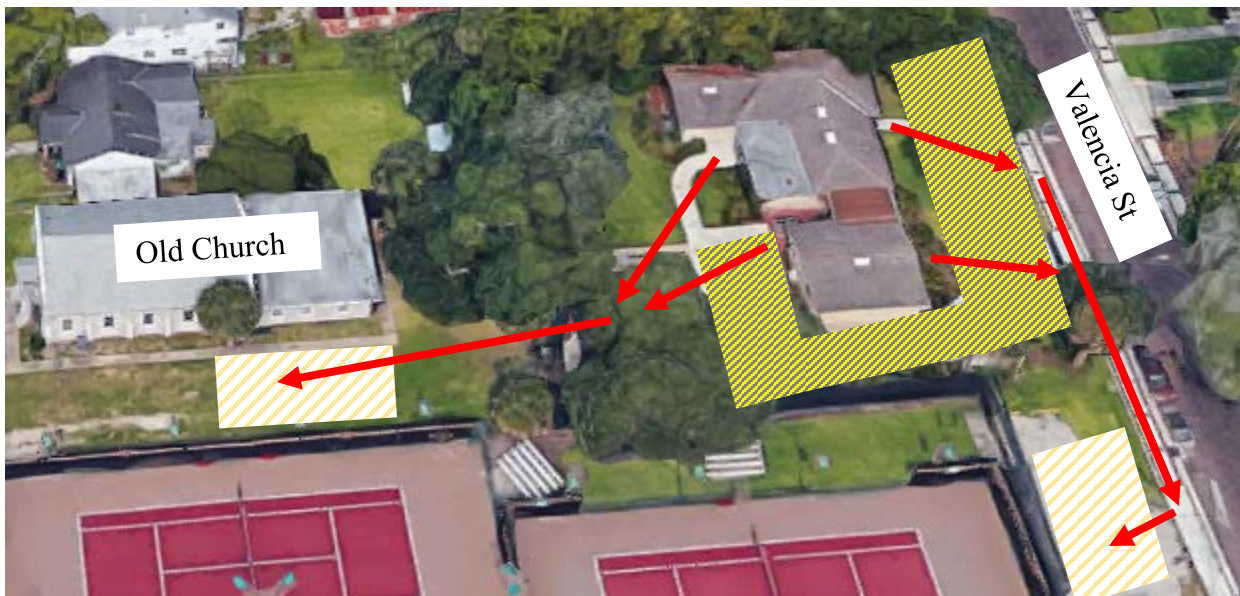
REMEMBER: It is extremely important to completely exit the building and stay out of roadways. Do not gather on the porch or in the stairwells, and stay clear of roadways (Oviedo and Riberia). Do not gather in the immediate parking areas, follow the assembly points list. Evacuate the immediate vicinity of the building but do not leave the area.


Flagler College
Emergency Action and Fire Safety Plan


65 Valencia Street

Main Floor

1. When alarm sounds, promptly leave room/office and exit building via the primary exit shown on the posted evacuation maps.
2. Use an alternate exit ONLY if the primary exit is blocked.
3. Use a window to exit the building ONLY if the first options are blocked or unavailable. (windows should only be used as a last resort)
4. After exiting the building, proceed to the closest gathering area/assembly point and await further instructions.
5. Do not attempt to re-enter the building for any reason.
6. Always remember to remain calm during the entire evacuation process.



 = Vehicle Emergency Access

 = Muster (assembly) area

Gathering Areas/Assembly Points:

- If exiting to Valencia Street, proceed East towards Tennis Complex. Muster in front of or inside of the tennis complex.
- If exiting into the backyard, proceed South through gate towards the old Church on Oviedo. DO NOT stay in the backyard.

REMEMBER: *It is extremely important to completely exit the building and stay out of roadways. Do not gather on the patio or backyard, and stay clear of Valencia Street. Do not gather in the immediate parking lot, follow the assembly points list. Evacuate the immediate vicinity of the building but do not leave the area.*

Flagler College
Emergency Action and Fire Safety Plan

Gymnasium

First Floor / Main Gym

1. When alarm sounds, promptly leave Gym / office and exit building via the primary exit shown on the posted evacuation maps.
2. Use an alternate exit ONLY if the primary exit is blocked.
3. Use a window to exit the building ONLY if the first options are blocked or unavailable. (windows should only be used as a last resort)
4. After exiting the building, proceed to the closest gathering area/assembly point and await further instructions.
5. Do not attempt to re-enter the building for any reason.
6. Always remember to remain calm during the entire evacuation process.

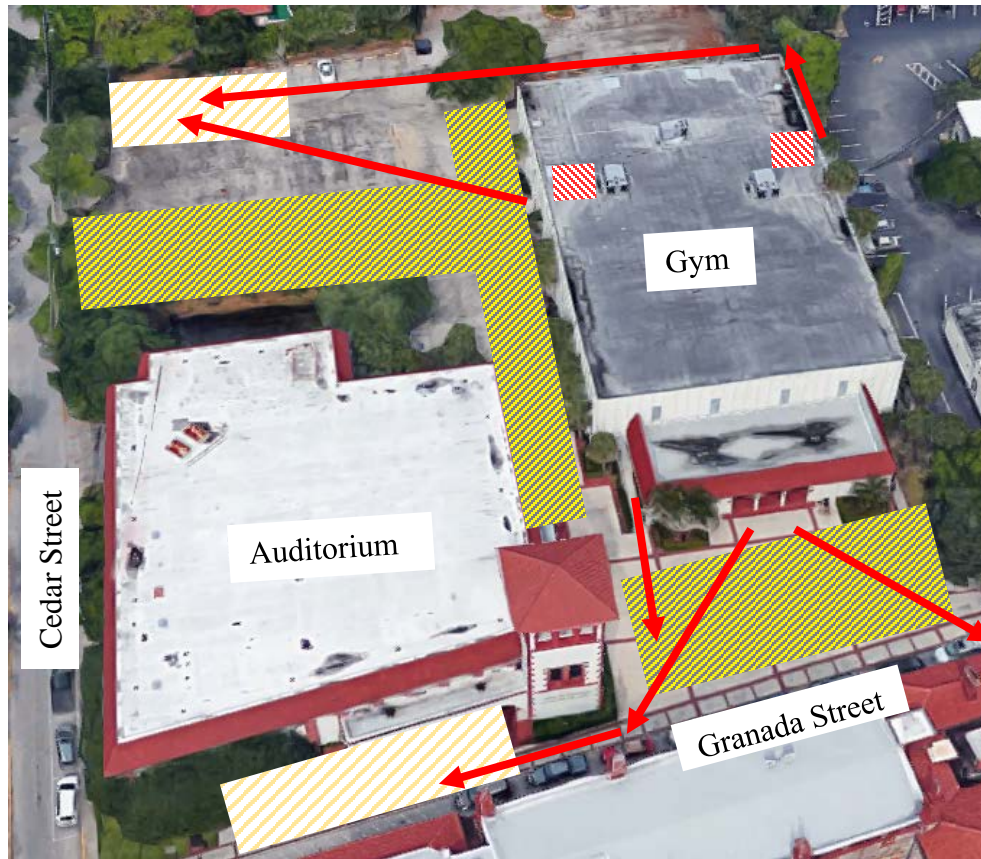
Second Floor


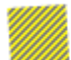

1. When alarm sounds, promptly leave room and exit building via the primary exit shown on the posted evacuation maps.
2. Use an alternate exit ONLY if the primary exit is blocked.
3. Do not use any window to exit the building. If other exit options are blocked, remain in an available stairwell until help arrives.
4. After exiting the building, proceed to the gathering area/assembly point and await further instructions.
5. Do not attempt to re-enter the building for any reason.
6. Always remember to remain calm during the entire evacuation process.

Gathering Areas/Assembly Points:

- Assemble in the East of the parking lot, away from parking lot entrances as to allow ease of access for Emergency vehicles
- If exiting out main lobby, proceed southeast to the front of the auditorium steps, at least 300 ft away
- If there is a large event, Security or staff members should also direct patrons to the front of the Lightner Museum into the grass area across Granada.

Flagler College Emergency Action and Fire Safety Plan



-  = Fire Exit / stairwell
-  = Vehicle Emergency Access
-  = Muster (assembly) area

REMEMBER: It is extremely important to completely exit the building! Do not gather on the porches or on the stairwell! Do not gather directly outside of main lobby along Granada Street, as Emergency Responders and vehicles will need clear access. Evacuate the immediate vicinity of the building but do not leave the area.

Flagler College
Emergency Action and Fire Safety Plan

Auditorium

Stage Level / Lobby

1. When alarm sounds, promptly leave room/office and exit building via the primary exit shown on the posted evacuation maps.
2. Use an alternate exit ONLY if the primary exit is blocked.
3. Use a window to exit the building ONLY if the first options are blocked or unavailable. (windows should only be used as a last resort)
4. After exiting the building, proceed to the closest gathering area/assembly point and await further instructions.
5. Do not attempt to re-enter the building for any reason.
6. Always remember to remain calm during the entire evacuation process.

Upper seating / Second Floor Stage and Classrooms



1. When alarm sounds, promptly leave room and exit building via the primary exit shown on the posted evacuation maps.
2. Use an alternate exit ONLY if the primary exit is blocked.
3. Do not use any window to exit the building. If other exit options are blocked, remain in an available stairwell until help arrives.
4. After exiting the building, proceed to the gathering area/assembly point and await further instructions.
5. Do not attempt to re-enter the building for any reason.
6. Always remember to remain calm during the entire evacuation process.

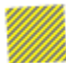
Gathering Areas/Assembly Points:

- Assemble in the East of the parking lot, away from parking lot entrances as to allow ease of access for Emergency vehicles
- If exiting out Main Lobby, proceed southeast and across the street towards the Lightner museum.

Flagler College Emergency Action and Fire Safety Plan



 = Fire Exit / stairwell
 = Muster (assembly) area

 = Vehicle Emergency Access

REMEMBER: It is extremely important to completely exit the building! Do not gather on the porches or on the stairwell! Do not gather directly outside of main lobby along Granada Street, as Emergency Responders and vehicles will need clear access. Evacuate the immediate vicinity of the building but do not leave the area.

Flagler College
Emergency Action and Fire Safety Plan

PLEASE ADVISE:

If you are unable to evacuate the building because of fire or smoke in the corridor:

1. Remain calm.
2. Close the door to the room you are in and call the FCCSS to report your position so that you can be rescued.
3. If smoke begins to come in under the door, stuff blankets or towels (preferably wet) under the door to prevent the smoke from coming in. Wave a brightly colored article of clothing or similar material in the window to attract attention;
4. **Do not** break the window unless absolutely necessary. Breaking the window may result in falling glass injuring people below or smoke entering the window making it more difficult to breath.

Do not re-enter the building, until:

1. The fire alarm has been silenced, *and*
2. The fire department/ or Department of Campus Safety and Security has indicated that it is acceptable to re-enter.